



DAVID KING
Out in the Sky



Up in the Sky, acrylic on linen, 140 x 160cm

artists' agents
fine art consultants
gallery

solomon

Tara Murphy
requests the pleasure of your company
at the opening day launch of

DAVID KING
Out in the Sky

on
Thursday 7 January 2021
from 12pm to 7pm

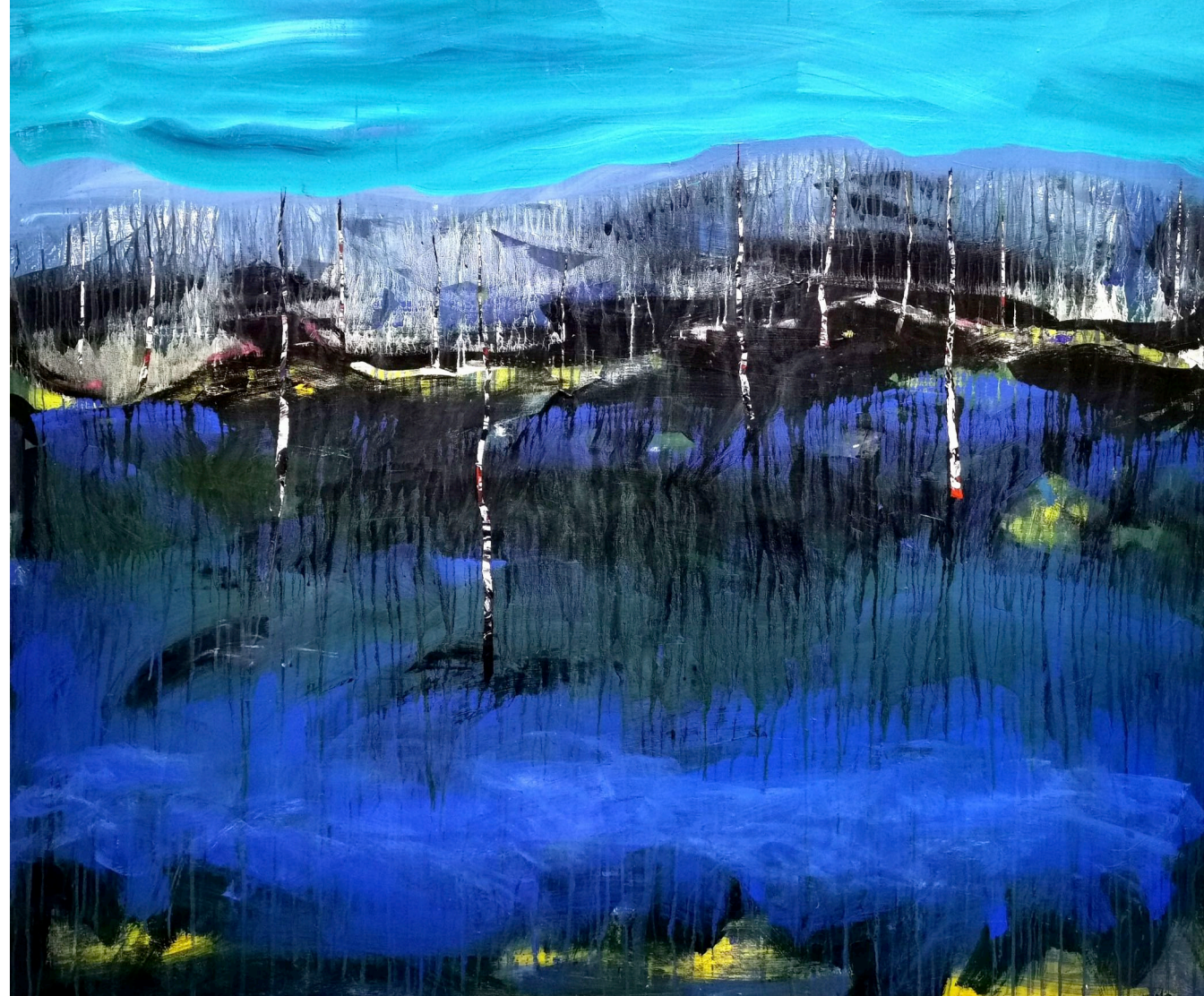
at
Solomon Fine Art, Balfe Street, Dublin 2

The exhibition continues until Saturday 30 January 2021
Opening hours: Monday to Friday 10.00am – 5.30pm / Saturday: 11am – 4pm
tel: +353 (0)1 672 4429 / email: info@solomonfineart.ie / www.solomonfineart.ie

front cover: *Out in the Sky*, acrylic on linen, 105 x 180cm
back cover: *River Portrait*, acrylic on linen, 130 x 150cm



A River Runs Through Me, acrylic on linen, 140 x 160 cm



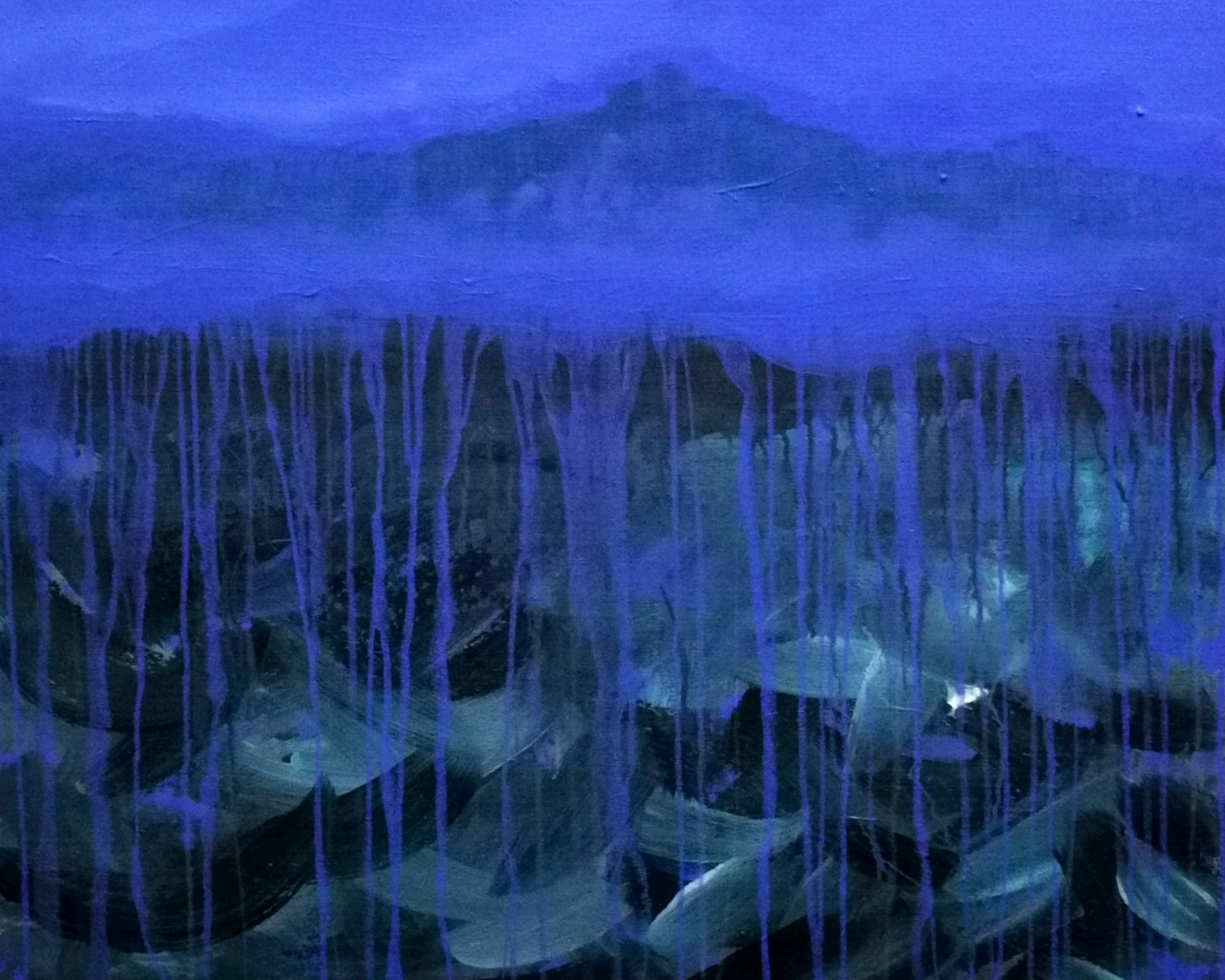
A River Runs Through It, acrylic on linen, 140 x 160 cm



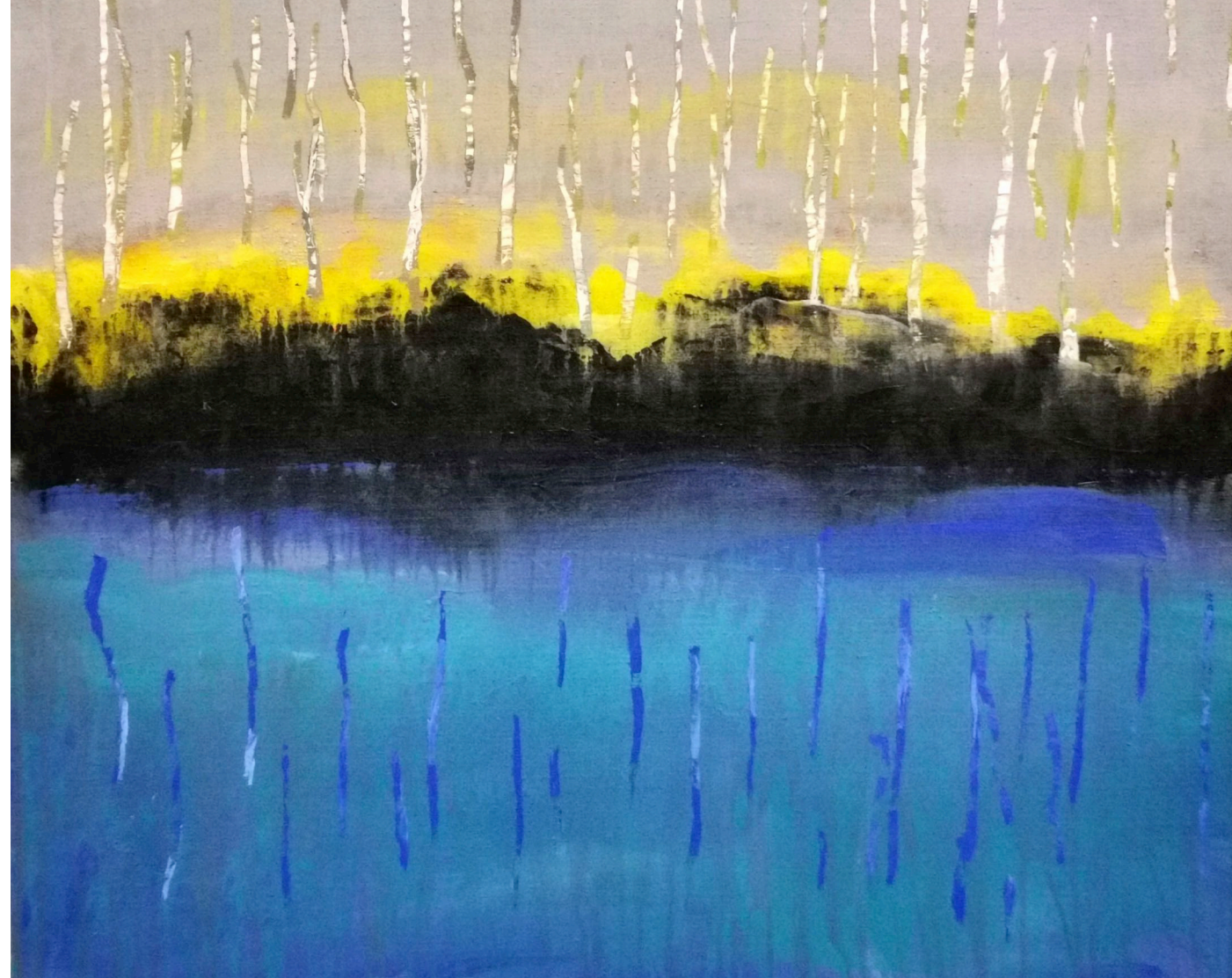
Red River, acrylic on linen, 110 x 130 cm

Peacock Field, acrylic on linen, 140 x 160 cm





Ebb and Flow, acrylic on linen, 75 x 90 cm



Ebb and Flow II, acrylic on linen, 75 x 90 cm



Millbrook - Morning Light, acrylic on linen, 44 x 61 cm

Among the Trees, acrylic on linen, 105 x 130cm





A River Runs Through It
 acrylic on linen
 30.5 x 40 cm



The Pith II
 acrylic on linen
 30.5 x 40 cm



The Pith IV
 acrylic on linen
 30.5 x 40 cm

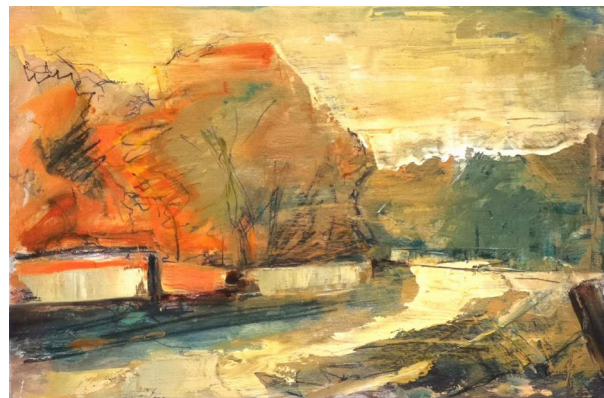
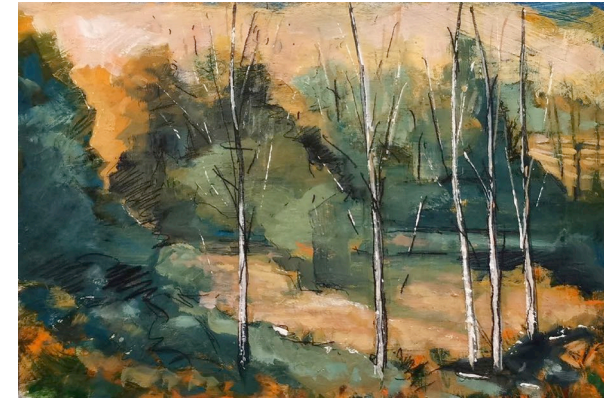


The Pith III
 acrylic on linen
 30.5 x 40 cm



Millbrook Series VII
acrylic on birch panel
20 x 30 cm

Millbrook Series I
acrylic on birch panel
20 x 30 cm



Millbrook Series II
acrylic on birch panel
20 x 30 cm

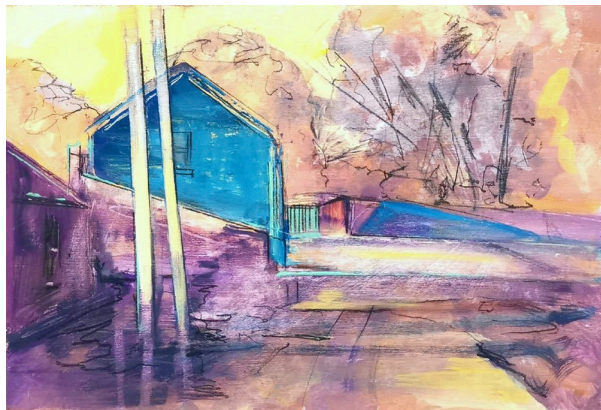
Millbrook Series VIII
acrylic on birch panel
20 x 30 cm





Millbrook Series III
 acrylic on birch panel
 20 x 30 cm

Millbrook Series VI
 acrylic on birch panel
 20 x 30 cm



Millbrook Series V
 acrylic on birch panel
 20 x 30 cm

Millbrook Series IV
 acrylic on birch panel
 20 x 30 cm



DAVID KING

David King was born in Dublin in 1972 and studied at the National College of Art & Design, graduating with a BA in Fine Art in 1997 and later in 2000 with a MA in Fine Art Practice & Theory. In 2017 he achieved an MA in Professional Education from NCAD.

King's practice incorporates multiple approaches, drawing from art history and contemporary perspectives. His work assimilates drawing and painting, often on a large scale, as well as sculpture, which utilise bone, stainless steel or corten steel and wood. For King the process and material correspond to the concept and the subject he is examining. Lately King has returned to the landscape, this time literally living the experience by painting *en plein air*.

King initially came to prominence for a series of emotionally intense painterly seascapes; the work questioned our relationship with memory, loss and the notions of figurative painting in the age of mechanical reproduction. One of the paintings from this series was awarded the inaugural prestigious Hennessy Craig Award at the Royal Hibernian Academy Annual Exhibition in 2002. His ever-evolving work is deeply embedded in the history of art.

King has exhibited extensively throughout Ireland and abroad. In 2013 his *Sapling series - Bone Lines* was chosen to represent Ireland at the Prince Pierre Contemporary Awards in Monaco where he was a finalist. In 2016 one of King's *Black Earth* works (a steel painted sculpture) was selected to represent *Art of the State*, an exhibition in Dublin Castle highlighting twenty diverse artists in the Irish State Art Collection.

His work can be found in many public and corporate collections including AIB, Bank of Ireland, Office of Public Works, Butler Gallery Collection, Kilkenny, ESB, First Active/Ulster Bank and AXA.

First published in 2021 by Solomon Fine Art

ISBN: 978-1-9163536-4-0

© Solomon Fine Art and the artist

All images in this catalogue are protected by copyright and should not be reproduced without the permission of the copyright holder. Details of the copyright holder to be obtained from Solomon Fine Art





DAVID KING

Out in the Sky

8 - 30 January 2021

Solomon Fine Art, Balfe Street, Dublin 2, Ireland / t: +353 (0)1 672 4429 / e: info@solomonfineart.ie / www.solomonfineart.ie