

CAROL HODDER

*Between Storms*





gallery

solomon

Tara Murphy requests the pleasure of your company  
at the private view of

CAROL HODDER

*Between Storms*

to be opened by

Marie Coveney

Painter & Writer

Thursday 1 September 2022

from 6pm to 8pm

The exhibition continues until Saturday 24 September 2022

Opening hours: Tuesday to Friday 10.00am – 5.30pm / Saturday: 11am – 4pm

Artworks may be viewed and acquired in advance at the gallery by appointment, via the Online Viewing Room  
at [www.solomonfineart.ie](http://www.solomonfineart.ie) - or simply scan the QR code below with your smartphone camera for prices and availability.

Solomon Fine Art

Balfe Street, Dublin 2, D02 T802, Ireland

t: +353 (0)1 672 4429 / e: [info@solomonfineart.ie](mailto:info@solomonfineart.ie) / [www.solomonfineart.ie](http://www.solomonfineart.ie)

front cover: *ROUGH WEATHER (detail)*, oil on canvas, 100 x 120 cm

inside cover: *ICE FIELD*, oil on canvas, 45 x 60 cm

back cover: *PAST REMAINS*, oil on canvas, 40 x 50 cm



## CAROL HODDER: *Between Storms*

The paintings for Carol Hodder's exhibition *Between Storms*, show an enduring fascination with paint application and the expressive properties of texture and colour. But the work also shows the ever-increasing attachment with personal narrative, that discretely underscores painterly preoccupations. Memories are aligned with physical journeys to places that resonate with emotion, and in turn, spark symbolic imagery that function as metaphors for time and place. For Hodder, inscape is just as important as landscape.

These paintings are not, as the title confirms, situated within the dramatic heart of the storm (in the Romantic, sublime tradition) and are instead, more about a lingering disquiet that resides midway between the security of shelter and the uneasy expectation for what approaches from the horizon.

The feeling that these landscapes provide a dramatic backdrop for movement from one destination to another, is made tangible by the increasing population of figures and buildings within her work. Tantalisingly, some of the paintings have an illustrative quality, as line is used with enhanced purpose, to suggest paths through a rock edifice, a clearing into a forest, or ancient incisions on rock. They act as navigation aids that lead the spirit deeper into the land, in search of heaven or hades.

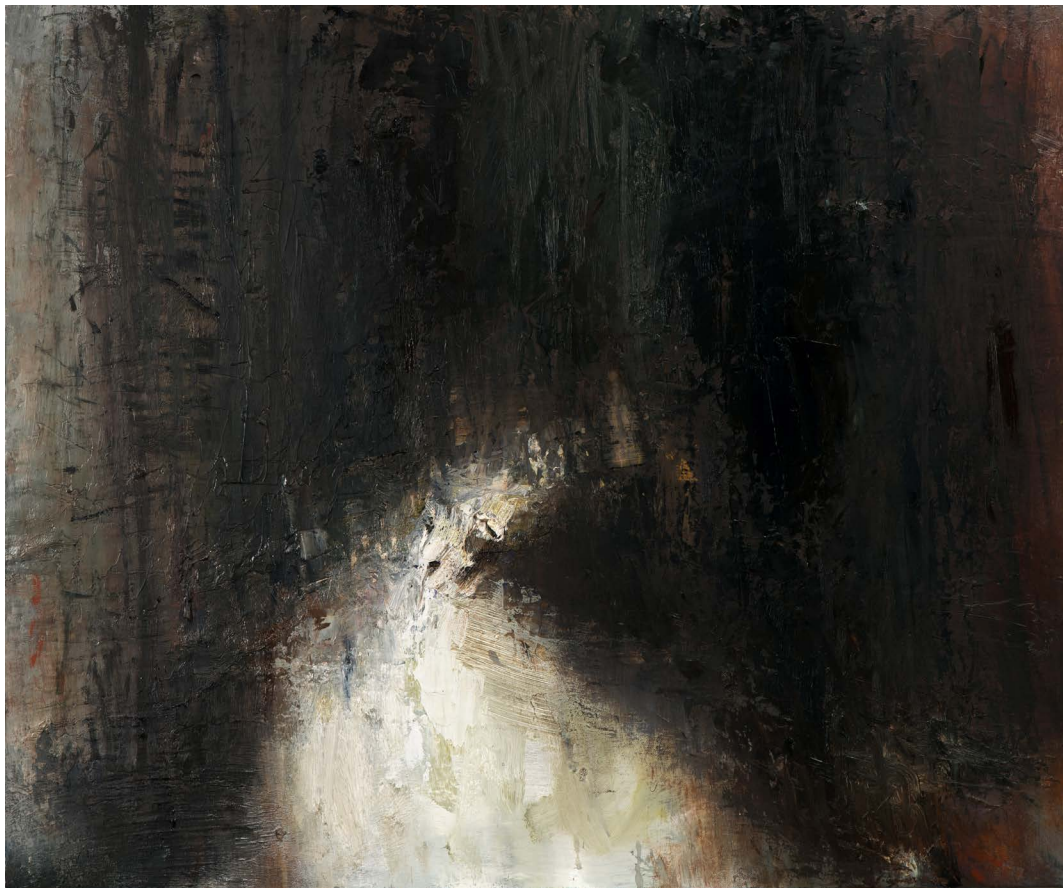
In the arresting and darkly beautiful painting 'Clearing', the staccato energy of the brushwork evokes tree trunks from a Brothers Grimm fairy-tale, the lines on closer scrutiny, seeming to form an ogham-like script. The comparison seems apt, as Hodder has spoken of how her paintings allude to childhood experiences of landscape and children's literature. For example, the exuberance and fear while fishing from a boat on Loch Derriana, Co. Kerry - mesmerised by the deep dark waters and powerful weather fronts as they rolled across the landscape - primed Hodder's formative inspirations. These endure to this day, with wistful, almost melancholic nostalgia.

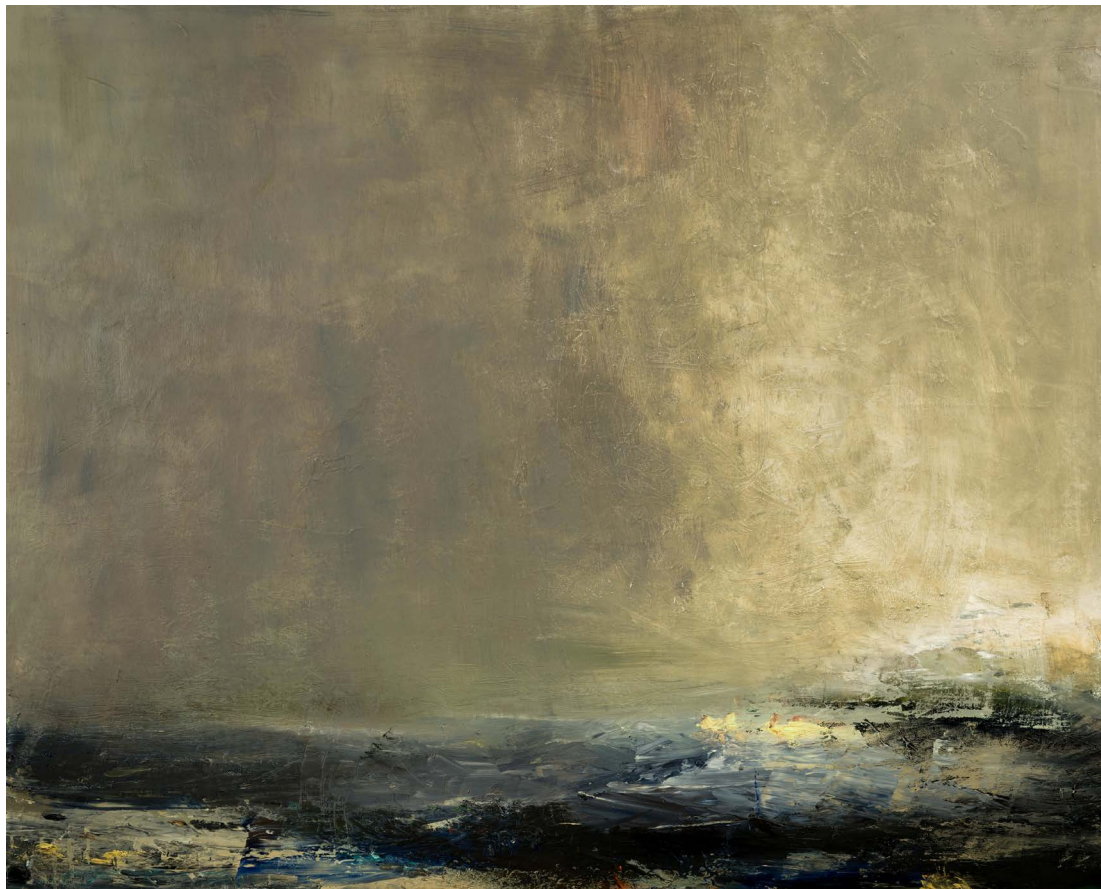
As an adult, drawn to Northwest Iceland, the artist sought out exaggerated versions of those formative experiences, with the extremes and contrasts of light, weather, and nature's superstructures, even more pronounced than those in Ireland. The elemental forces brought with them heightened appreciation for geometric form, as the irresistible forces that shaped rock and glacier, distil imagery to pristine, minimalist simplicity. The rectangular shapes of ice and rock are echoed in the architecture of desolate, abandoned buildings returning to ruin. Ghostly silhouettes of human form, move stealthily from structure to void, nomads betwixt and between, nowhere and everywhere.

Mark Ewart

*Mark Ewart is a lecturer in Art and Design Education at MTU Crawford College of Art and Design, Cork.  
He is also an art teacher at Ashton School, a writer and artist based in Cork City.*

*CLEARING*  
oil on canvas  
75 x 90 cm

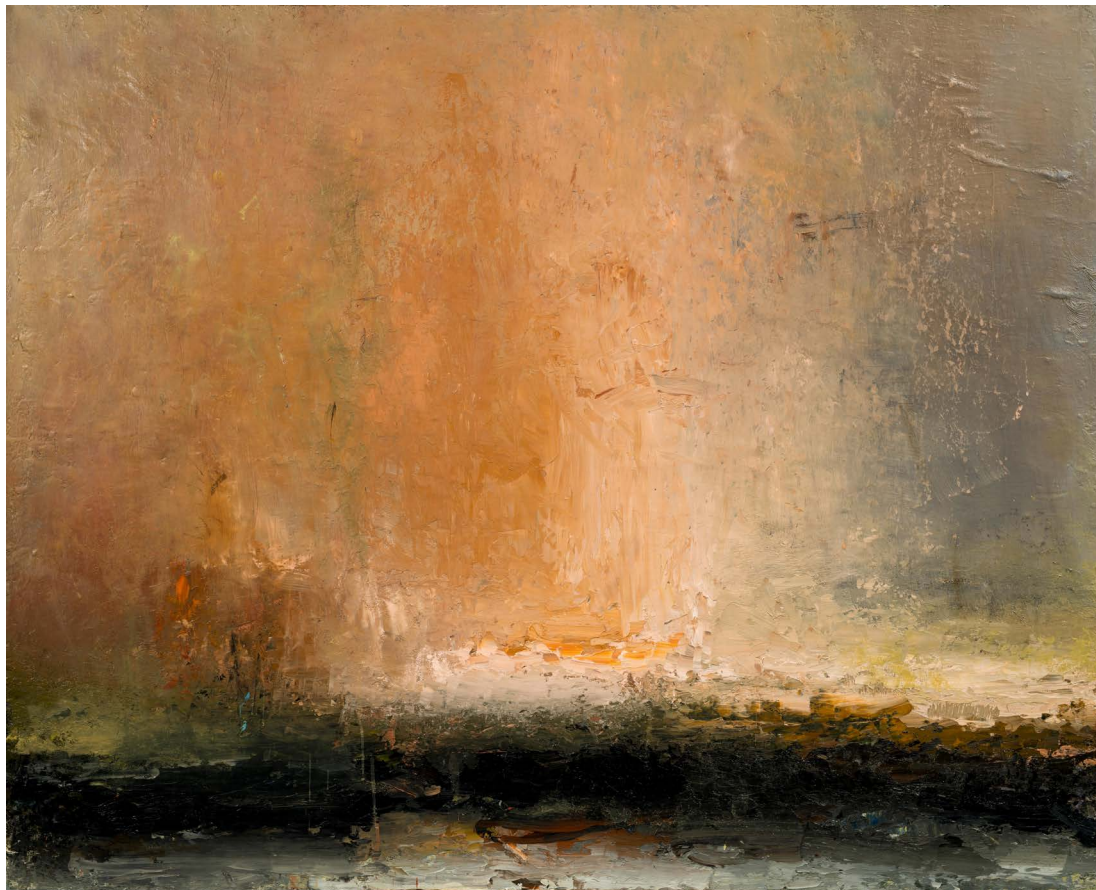




*SWELL*  
oil on canvas  
120 x 150 cm

*SWIMMERS*  
oil on canvas  
122 x 122 cm





Left:  
*BETWEEN STORMS*  
oil on canvas  
122 x 152 cm

Right:  
*PAST REMAINS*  
oil on canvas  
40 x 50 cm

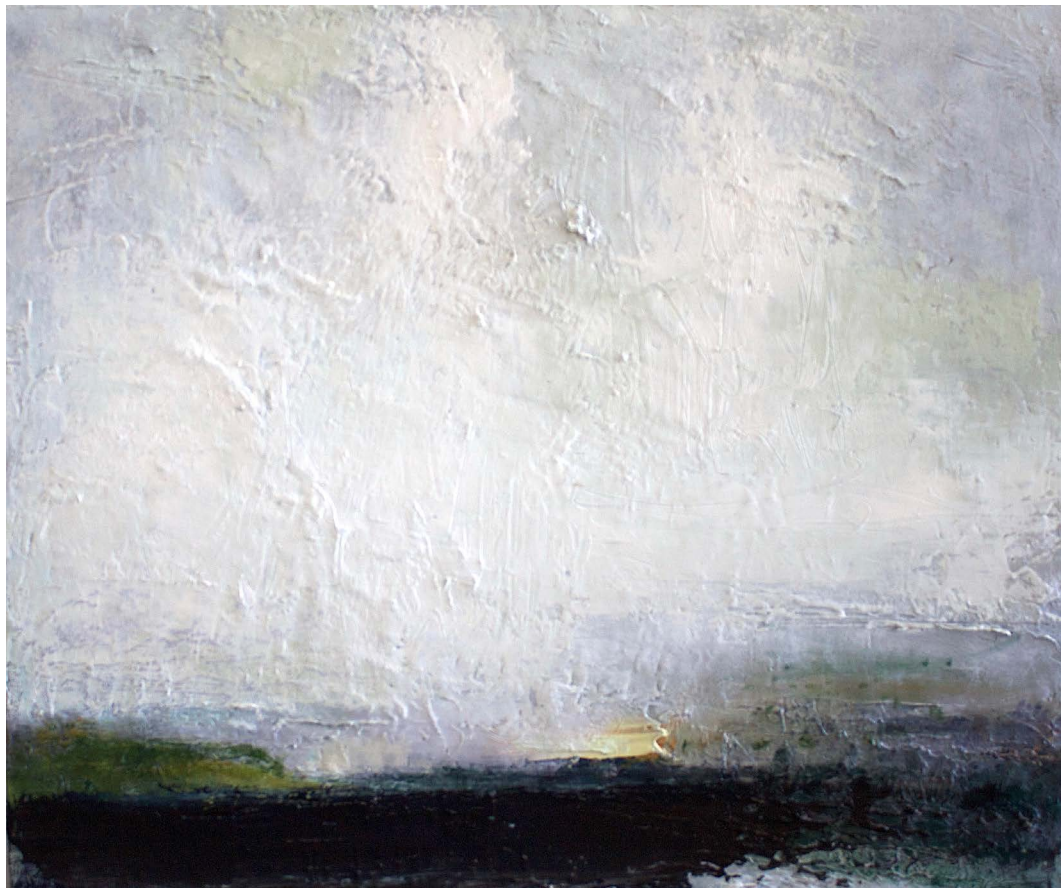




Left:  
*SWIMMER*  
oil on canvas  
60 x 50 cm

Right:  
*LAKE FOG*  
oil on canvas  
40 x 50 cm





Left:  
*LAVA FIELDS*  
oil on canvas  
50 x 60 cm

Right:  
*BETWEEN STORMS II*  
oil on canvas  
100 x 120 cm





*DESCENDING WEATHER IV*, oil on canvas, 25 x 40 cm



*DESCENDING WEATHER V*, oil on canvas, 25 x 40 cm



*DESCENDING WEATHER*, oil on canvas, 36 x 58 cm



*DESCENDING WEATHER II*, oil on canvas, 36 x 58 cm



COASTAL RAIN, oil on canvas, 40 x 65 cm



QUARRY MOON, oil on canvas, 36 x 58 cm



*DESCENDING WEATHER III*, oil on canvas, 25 x 40 cm

*SWIMMER II*  
oil on canvas  
30 x 25 cm





Left:  
*ROUGH WEATHER*  
oil on canvas  
100 x 120 cm

Right:  
*TIDE LINE*  
oil on canvas  
50 x 60 cm





*LIGHT RAIN*  
oil on canvas  
60 x 60 cm

*PORTAL*  
oil on canvas  
40 x 40 cm





Left:  
*FLOOD FIELD*  
oil on canvas  
26 x 31 cm

Right:  
*BEALACH OISIN*  
oil on canvas  
75 x 90 cm



## CAROL HODDER

Carol Hodder is self-taught Irish painter, who has exhibited widely around Ireland, in Beijing China and also at the Royal Academy Summer Exhibition in London. In 2015 she won the Republic of Ireland Award for the UK's National Open Art Exhibition. In 2017 she was invited to undertake a two month residency at the Josef & Anni Albers Foundation, Connecticut which was grant aided by the Arts Council of Ireland. She is a Fellow of the Ballinglen Arts Foundation, Ballycastle, Co. Mayo.

### SOLO EXHIBITIONS

2022	Between Storms, Solomon Fine Art, Dublin
2020	Facing North, Solomon Fine Art, Dublin
2018	Inflow, Solomon Fine Art, Dublin
2016	Shorelines, Catherine Hammond Gallery, Skibbereen, Co. Cork
2011	Leanings, Catherine Hammond Gallery, Glengarriff (in conjunction with West Cork Literary Festival)
2010	Landmarks, Catherine Hammond Gallery, Glengarriff
2007	Wetlands, The Pigyard Gallery, Wexford
2000	Landmarks, Sirius Arts Centre, Cobh Co. Cork
	COE 2000, Claremorris, Mayo

### SELECTED GROUP EXHIBITIONS

2022 - 2017	Solomon Fine Art, Summer Group Exhibition
2022, 15, 14	The Royal Academy Summer Exhibition, London
2021-2004	Catherine Hammond Gallery (regular group exhibitions)
2021	Verso Art Project, Lismore Castle Arts
2021, 20	Art on a Postcard, for International Women's Day, The Allbright, Mayfair, London
2021, 20	Scoop Foundation, Auction
2019	McKenna Gallery, Co. Tyrone
	Shortlisted, Royal Academy Summer Exhibition, London
	Legacy Boyle Arts Festival 30th Anniversary Exhibition, Co. Roscommon
2019 -14	VUE Contemporary, RHA, Dublin (with Solomon Fine Art, Dublin & Catherine Hammond Gallery, Cork)
2019, 18, 17	Boyle Arts Festival, Roscommon
2018, 15	Skibbereen Arts Festival, Co. Cork
2017, 16, 15	Art on a Postcard, Unit, London, Maddox Gallery, London & Soho Revue Gallery, London
2017, 16, 15	National Open Art (NOA), London, Sussex & Chichester

2016	DRAW - Backwater Artists, Cork
2016, 12, 02, 01	CASe, Lavit Gallery Cork
2015	Harrogate International Visual Arts Expo (HIVE)
2014	On the Edge of the World, Ballina Arts Centre, Co. Mayo
2013, 02	The Lime Tree Gallery, Kenmare
2013, 09, 03, 01, 99-97, 94	Lavit Gallery, Cork (regular group exhibitions)
2010	On the Edge of Abstraction, Urban Retreat Gallery
2009	Images from North Mayo, Courthouse Gallery, Ballycastle
2007	Through Irish Eyes, Bejiing Institute of Graphic Communication, Bejiing, China
2006, 03	Tidelines, Gallery One, Kilkenny (two person)
2005, 04,	Hillsboro Fine Art, Dublin
2005	C2, Crawford Municipal Art Gallery, Cork
2004, 03	Decade I +II, The Sirius Arts Centre, Cobh, Co. Cork
2003, 01	Eigse, Carlow Arts Festival
2003	Ballinglen The Artists in Rural Ireland, Mayo
	General Hospital, Castlebar, Co. Mayo
2002, 01	Oireachtas, Dun Laoghaire County Hall, Dublin
2002	Art of Love, Gallery 44, Cork
	Bass Contemporary Art Awards, Northern Ireland
	Art in St. Finbarre's, Cork
2002	Aisling Geal, Riverbank Arts Centre, Newbridge, Co. Kildare
2001	Cill Rialig project, Waterville, Co Kerry
2001-98, 95, 93	Iontas, National Small Works Exhibition, Sligo, Dublin, Limerick, Belfast and Cork
2001, 1999-96	Caldwell Gallery, Belfast
2001, 95	Royal Ulster Academy, Belfast, Northern Ireland
2000	Silent Echoes, Kilmallock, Co Cork (3 person show
1998	Newtown Connections, Garter Lane, Arts Centre, Wexford
	Cork University Hospital, 20th Anniversary Exhibition
1997	New Generations, Triskel Gallery, Cork
	Art Trail '97, Proby's, Cork
1997	The Dyehouse Gallery, Waterford
1997, 96	The Antique Print Gallery, Pittsburgh, USA
1996	Exhibition of Living Art, Liberty Hall, Dublin

1995, 93, 92, 91 Royal Hibernian Academy, Dublin  
 1995 Scoip '95, Siamsa Tire, Tralee, Co. Kerry  
 Spillers Lane Gallery, Clonakilty, Co. Cork  
 1994 Uisce, Jameson Gallery, Midleton, Co. Cork  
 Laid Bare, Wellspring Gallery, Tralee, Co. Kerry

#### AWARDS/RESIDENCIES

2022, 2019 Nes, Skagastrond, Iceland  
 2017 The Josef and Anni Albers Foundation, Connecticut  
 Arts Council of Ireland Travel and Training Award  
 2015 The Republic of Ireland Award, National Open Art, London (NOA 2015)  
 2014 The Golden Fleece Award (shortlisted artist)  
 2008-1999 The Ballinglen Arts Foundation, Ballycastle, Co. Mayo; Fellowship and Residencies  
 2007 Arts Council Travel Grant, Beijing, China / Beijing Institute of Graphic Communication, China  
 2006 The Pouch Cove Foundation, Newfoundland  
 2005-2000 Board member, Sirius Arts Centre  
 2002 Cill Rialaig, Ballinskelligs, Co Kerry

#### COLLECTIONS

The Josef & Anni Albers Foundation  
 The Ballinglen Museum of Contemporary Art  
 Office of Public Works  
 Bank of Ireland  
 Druid's Glen Hotel & Golf Resort  
 Carlton Hotel Group  
 The Chichester Arts Trust  
 Cork University Hospital, Millennium Collection  
 Limerick County Council  
 Newtown School, Waterford  
 Patrick J. Murphy  
 Scott Tallon Walker Architects  
 Bunnyconnellan House, Myrtleville  
 The Pouch Cove Foundation, Newfoundland

# Carol Hodder: Between Storms

1 - 24 September 2022

1. Swell	oil on canvas	120 x 150cm
2. Between Storms	oil on canvas	122 x 152cm
3. Swimmers	oil on canvas	122 x 122cm
4. Between Storms II	oil on canvas	100 x 120cm
5. Rough Weather	oil on canvas	100 x 120cm
6. Clearing	oil on canvas	75 x 90cm
7. Bealach Oisin	oil on canvas	75 x 90cm
8. Light Rain	oil on canvas	60 x 60cm
9. Tide Line	oil on canvas	50 x 60cm
10. Swimmer	oil on canvas	60 x 50cm
11. Lava Fields	oil on canvas	50 x 60cm
12. Ice Field	oil on canvas	40 x 60cm
13. Coastal Rain	oil on canvas	40 x 65cm
14. Descending Weather II	oil on canvas	36 x 58cm
15. Past Remains II	oil on canvas	36 x 58cm
16. Descending Weather	oil on canvas	36 x 58cm
17. Quarry Moon	oil on canvas	36 x 58cm
18. Past Remains	oil on canvas	40 x 50cm
19. Lake Fog	oil on canvas	40 x 50cm
20. Portal	oil on canvas	40 x 40cm
21. Descending Weather III	oil on canvas	25 x 40cm
22. Descending Weather IV	oil on canvas	25 x 40cm
23. Descending Weather V	oil on canvas	25 x 40cm
24. Flood Field	oil on canvas	26 x 31cm
25. Swimmer II	oil on canvas	30 x 25cm

First published in 2022 by Solomon Fine Art

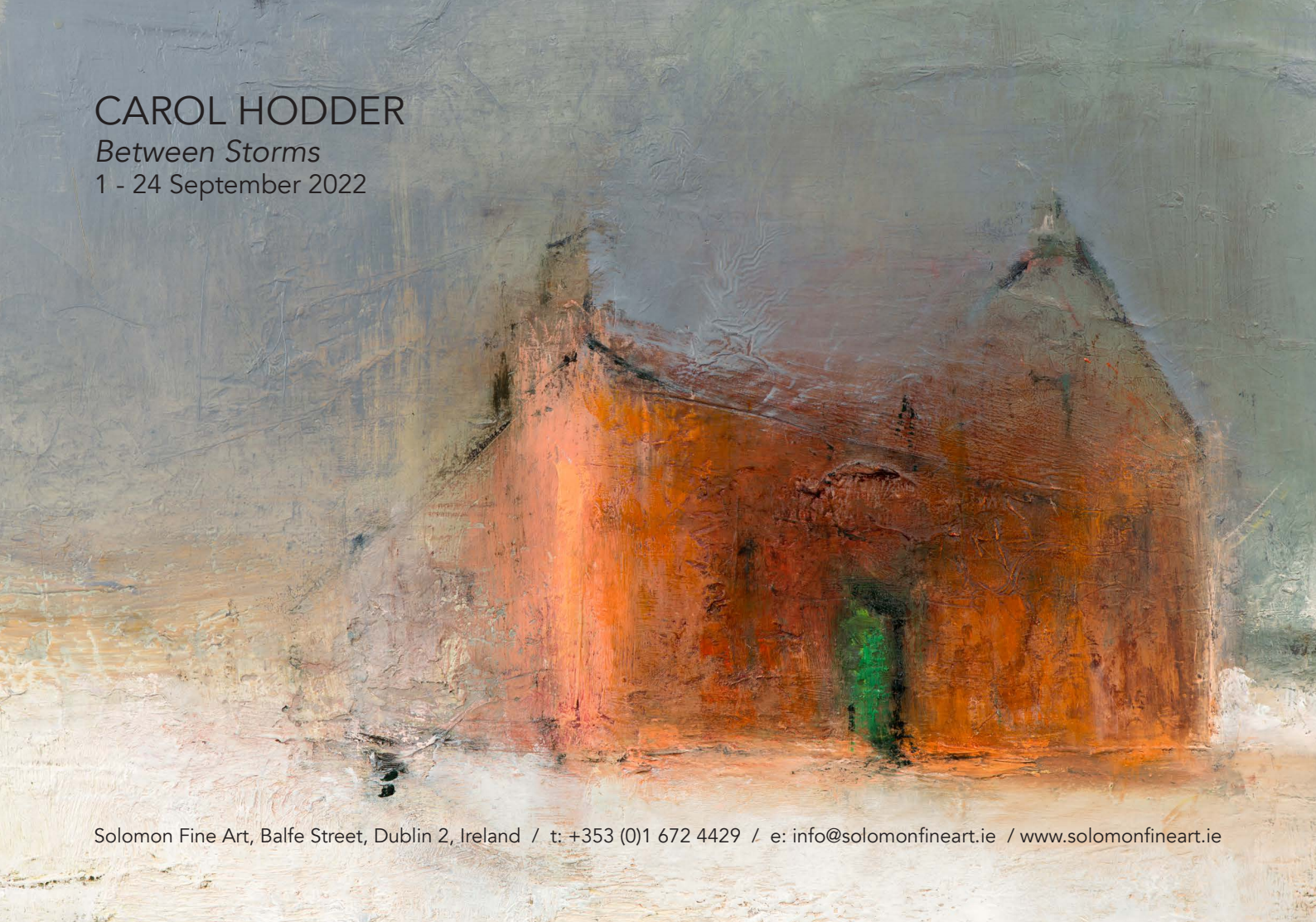
ISBN: 978-1-7397470-5-3

*All images in this catalogue are protected by copyright*

CAROL HODDER

*Between Storms*

1 - 24 September 2022



Solomon Fine Art, Balfe Street, Dublin 2, Ireland / t: +353 (0)1 672 4429 / e: [info@solomonfineart.ie](mailto:info@solomonfineart.ie) / [www.solomonfineart.ie](http://www.solomonfineart.ie)