

The Disembodied Adventures of Cléa
CLÉA VAN DER GRIJN



gallery

solomon

CLÉA VAN DER GRIJN

The Disembodied Adventures of Cléa

Thursday 9 February 2023

from 6pm to 8pm

to be opened by

Dr. Keith Gaynor, Senior Clinical Psychologist

followed by a musical response to the paintings by

Steve Wickham (The Waterboys)

The exhibition continues until Saturday 4 March 2023

Opening hours: Tuesday to Friday 10am - 5.30pm / Saturday: 11am - 4pm

Artworks may be viewed and acquired in advance at the gallery by appointment / via the Online Viewing Room at www.solomonfineart.ie / or simply scan the QR code below with your smartphone camera for prices and availability

Solomon Fine Art

Balfe Street, Dublin 2, D02 T802, Ireland

t: +353 (0)1 672 4429 / e: info@solomonfineart.ie / www.solomonfineart.ie

Front cover: TWO HARES AND PSILOCYBIN (detail), mixed media on linen, 56 x 56 cm

Inside front cover: YES. THIS IS HOW IT IS, mixed media on linen, 60 x 80 cm

Back cover: SYNCHRONICITY, mixed media on linen, 108 x 108 cm





FLAMINGO AND ALICE
mixed media on linen
108 x 108 cm

CLÉA VAN DER GRIJN

The disembodied adventures of Cléa is a series of new paintings inspired by Lewis Carroll's iconic novel *Alice in Wonderland*. Van der Grijn utilises popular imagery from the book, along with its themes of displacement and transformation to reflect her own experiences with personality disorder, addiction, depression and recovery, and to illustrate both the complexity and absurdity of what it is to be human.

These new works on linen canvas demonstrate the artist's process orientated philosophy, whereby compositions are formed in an unconventional and impulsive manner. Often deconstructed and reformed, the paintings deliberately reveal traces of their history, whereby the nature of their materiality is brought to the foreground.

Cléa van der Grijn is an internationally acclaimed, award-winning, visual artist and independent film maker based in Sligo. She employs various media in her practice, including experimental film, large format photography, sculpture, drawing and painting. Her films *JUMP* (2019) and *FLUX* (2021) have won awards at numerous film festivals worldwide including WorldFest-Houston International Film Festival (Remi Award), Denver Underground Film Festival, New York International Film Festival, New Jersey Film Festival, Melbourne Underground Film Festival, Toronto International Film Festival and Oaxaca FilmFest, Mexico, amongst others.

She is currently working on her first independent experimental feature film (written, produced, directed, edited by Cléa) which will be privately screened at Solomon Fine Art at a later date in 2023.

Cléa van der Grijn's work is represented in numerous public collections including the Irish Museum of Modern Art (IMMA), Office of Public Works, Arts Council of Ireland, Bank of Ireland, AIB Bank, The Gate Theatre, Bord Gáis and the Victoria & Albert Museum, London.

www.cleavandergrijn.com

www.instagram.com/cleaelisa/



CHILL
mixed media on linen
108 x 108 cm

CATERPILLAR AND DODO
mixed media on linen
108 x 108 cm





DIVING DOWN
THE RABBIT HOLE
mixed media on linen
108 x 108 cm

HOOKAH SMOKING
CATERPILLAR
mixed media on linen
108 x 108 cm





LOST HER HEAD
mixed media on linen
108 x 108 cm

RISK
mixed media on linen
108 x 108 cm





BENDING BACKWARDS
mixed media on linen
108 x 108 cm

TWO HARES
AND PSILOCYBIN
mixed media on linen
56 x 56 cm





ALERT
mixed media on linen
56 x 56 cm



OM
mixed media on linen
56 x 56 cm



SEEING FEET IN THE RAIN
mixed media on linen
56 x 56 cm



FLAMINGO WITH BEADS
mixed media on linen
56 x 56 cm



RED PINK HARE
mixed media on linen
56 x 56 cm



PSILOCYBIN MUSHROOM
mixed media on linen
56 x 56 cm



THE LORAX
mixed media on linen
56 x 56 cm



DISREGARDING
mixed media on linen
56 x 56 cm



THE DODO (FORMAL SILHOUETTE PORTRAIT)
mixed media on linen
56 x 56 cm



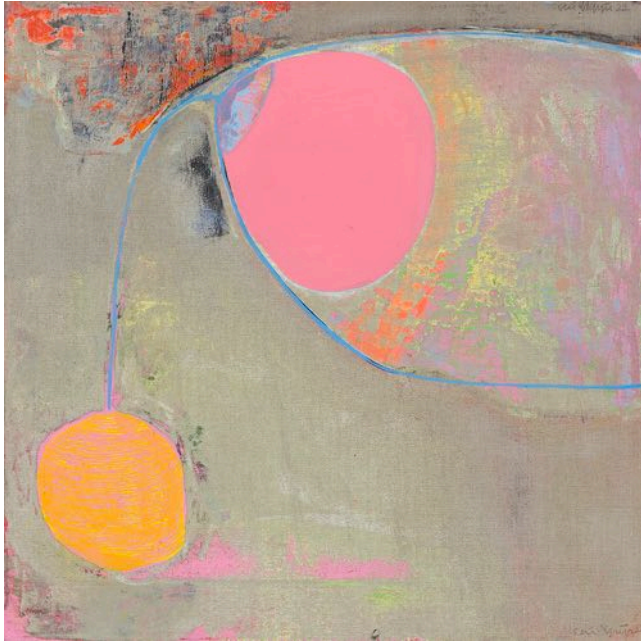
BLUE HARE AND PSILOCYBIN MUSHROOM
mixed media on linen
56 x 56 cm



THE DODO
mixed media on linen
56 x 56 cm



JUST TWO BIRDS HAVING A CHAT
mixed media on linen
56 x 56 cm



PEERING IN
mixed media on linen
56 x 56 cm



FLAMINGO WITH RUFFLE BLOUSE
mixed media on linen
56 x 56 cm



SWIMMER
mixed media on linen
56 x 56 cm



CATERPILLAR
mixed media on linen
56 x 56 cm

The Disembodied Adventures of Cléa

9 February - 4 March 2023

Lost Her Head	mixed media on linen	108 x 108 cm
Diving Down the Rabbit Hole	mixed media on linen	108 x 108 cm
Bending Backwards	mixed media on linen	108 x 108 cm
Caterpillar and Dodo	mixed media on linen	108 x 108 cm
Synchronicity	mixed media on linen	108 x 108 cm
Risk	mixed media on linen	108 x 108 cm
Hookah Smoking Caterpillar	mixed media on linen	108 x 108 cm
Flamingo and Alice	mixed media on linen	108 x 108 cm
Chill	mixed media on linen	108 x 108 cm
Yes. This is how it is.	mixed media on linen	60 x 80 cm
Psilocybin in the Garden	mixed media on linen	60 x 80 cm
Disregarding	mixed media on linen	56 x 56 cm
OM	mixed media on linen	56 x 56 cm
Alert	mixed media on linen	56 x 56 cm
Flamingo and Beads	mixed media on linen	56 x 56 cm
Seeing Feet in the Rain	mixed media on linen	56 x 56 cm
Swimmer	mixed media on linen	56 x 56 cm
Caterpillar	mixed media on linen	56 x 56 cm
Flamingo with Ruffle Blouse	mixed media on linen	56 x 56 cm
Just two birds having a chat	mixed media on linen	56 x 56 cm
Peering in	mixed media on linen	56 x 56 cm
The Dodo	mixed media on linen	56 x 56 cm
Blue Hare and Psilocybin Mushroom	mixed media on linen	56 x 56 cm
The Dodo (Formal Silhouette Portrait)	mixed media on linen	56 x 56 cm
The Lorax	mixed media on linen	56 x 56 cm
Two Hares and Psilocybin	mixed media on linen	56 x 56 cm
Red Pink Hare	mixed media on linen	56 x 56 cm
Psilocybin Mushroom	mixed media on linen	56 x 56 cm

ISBN: 978-1-7397470-8-4

First published in 2023 © Solomon Fine Art and the artist

All images in this catalogue are protected by copyright and should not be reproduced without the permission of the copyright holder.

PSILOCYBIN IN THE GARDEN
mixed media on linen
60 x 80 cm





CLÉA VAN DER GRIJN

9 February - 4 March 2023

Solomon Fine Art, Balfe Street, Dublin 2, Ireland / t: +353 (0)1 672 4429 / e: info@solomonfineart.ie / www.solomonfineart.ie