

EILIS O'CONNELL  
Hardware / Software





Tara Murphy requests the pleasure of your company  
at the private view of

EILIS O'CONNELL RHA

*Hardware / Software*

to be opened by

Christina Kennedy, Senior Curator: Head of Collections, Irish Museum of Modern Art (IMMA)

Thursday 26 October 2023

from 6pm to 8pm

### Artist Talk

Eilis O'Connell in conversation with Dr. Riann Coulter, Director F.E. McWilliam Gallery, Banbridge, Co. Down  
2pm, Sunday 12 November 2023 (*Dublin Gallery Weekend*)

The exhibition continues until Saturday 18 November 2023

Opening hours: Tuesday to Friday 10.00am–5.30pm / Saturday: 11am–4pm

Artworks may be viewed and acquired in advance at the gallery by appointment, via the Online Viewing Room  
at [www.solomonfineart.ie](http://www.solomonfineart.ie) - or simply scan the QR code below with your smartphone camera for prices and availability.

### Solomon Fine Art

Balfe Street, Dublin 2, D02 T802, Ireland

t: +353 (0)1 672 4429 / e: [info@solomonfineart.ie](mailto:info@solomonfineart.ie) / [www.solomonfineart.ie](http://www.solomonfineart.ie)

Front & inside covers: *IMATRA*, Carrara marble, edition of 3, 22 x 24 x 26 cm

gallery  
solomon







*CURVE CONTINUOUS*  
Jesmonite, paint & ink, unique  
15 x 40 x 35 cm

*SPRAWL*  
bronze, edition of 5  
25 x 36 x 46 cm





*CONCRETION*  
Arabescato marble  
edition of 3  
26 x 28 x 35 cm



*CONCRETION*  
Portuguese pink marble  
edition of 3  
26 x 28 x 35 cm



*TORC*  
Jesmonite, glass cloth, paint, unique  
42 x 40 x 16 cm

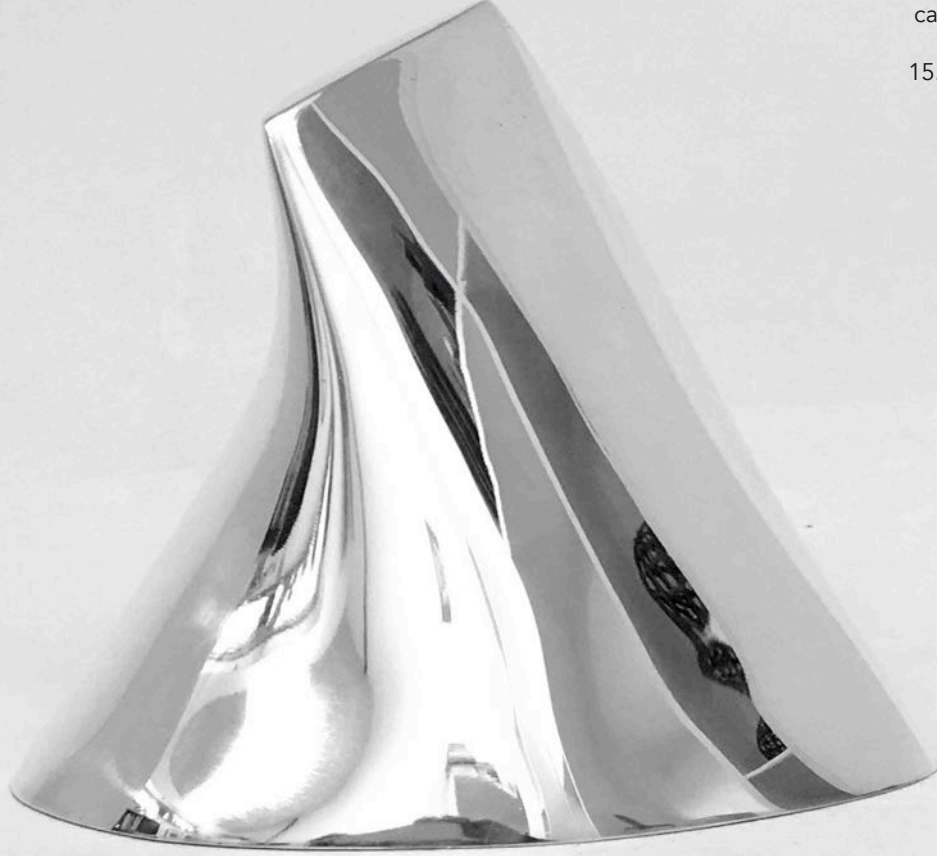
*FURROW*  
bronze, edition of 10  
31.5 x 42 x 25 cm







*WHORL*  
bronze, edition of 7  
21 x 24 x 30 cm



*PRAIRIE*  
cast sterling silver  
edition of 8  
15.5 x 17 x 6.5 cm



*CAVUS*  
bronze, edition of 7  
17 x 42 x 34 cm

*SCRIBBLE*  
cast sterling silver, ed. of 10  
24 x 23 x 27 cm





*SHELTER*  
bronze, edition of 5  
44 x 21 x 26 cm

*CUTAWAY*  
bronze, edition of 10  
26 x 22 x 42 cm





*SLOPE*

Carrara marble, ed. of 3  
32 x 35 x 19 cm

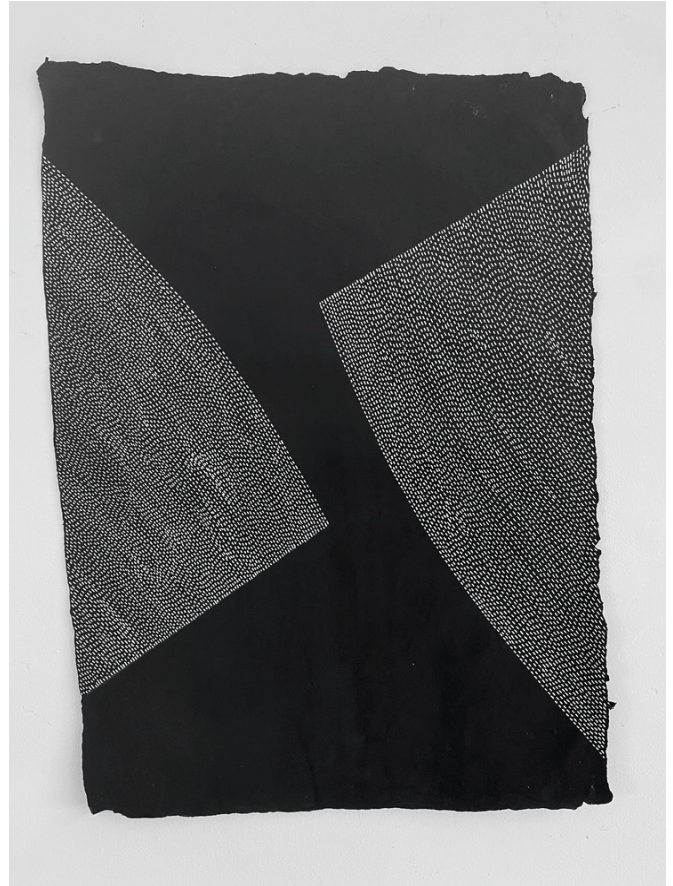
*POLES APART*

Carrara marble, ed. of 3  
29 x 31 x 19 cm

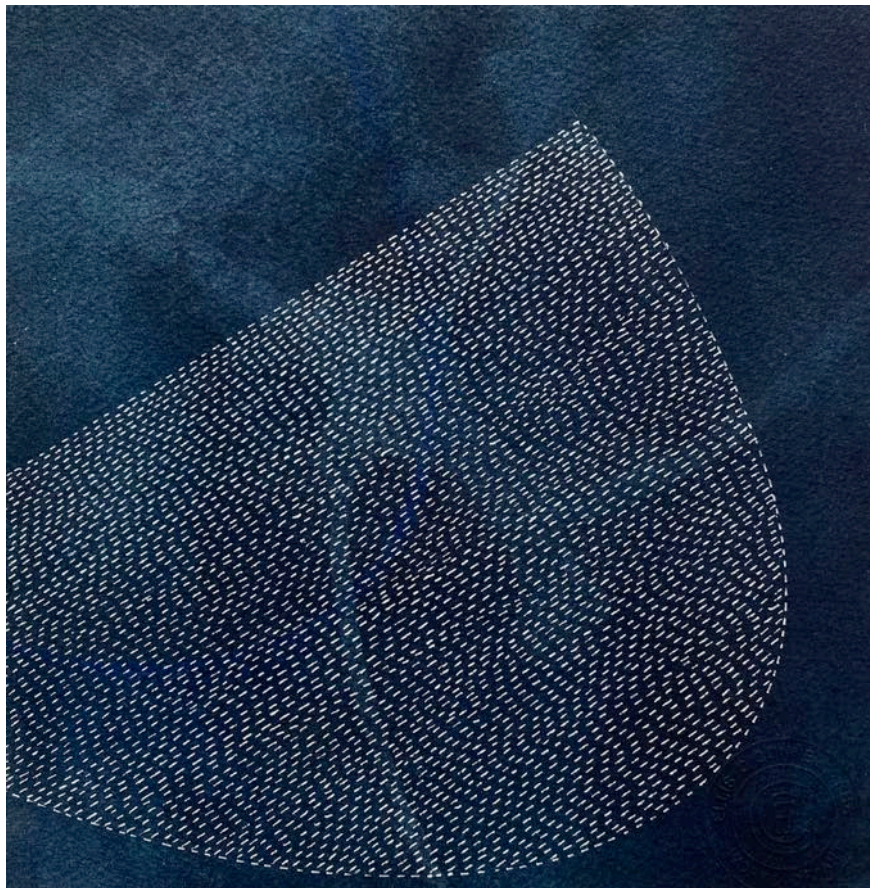




from left to right:  
*UNLIKELY / PASS / MAYBE* (triptych)  
all acrylic and ink on paper  
71 x 53.5 cm (each)

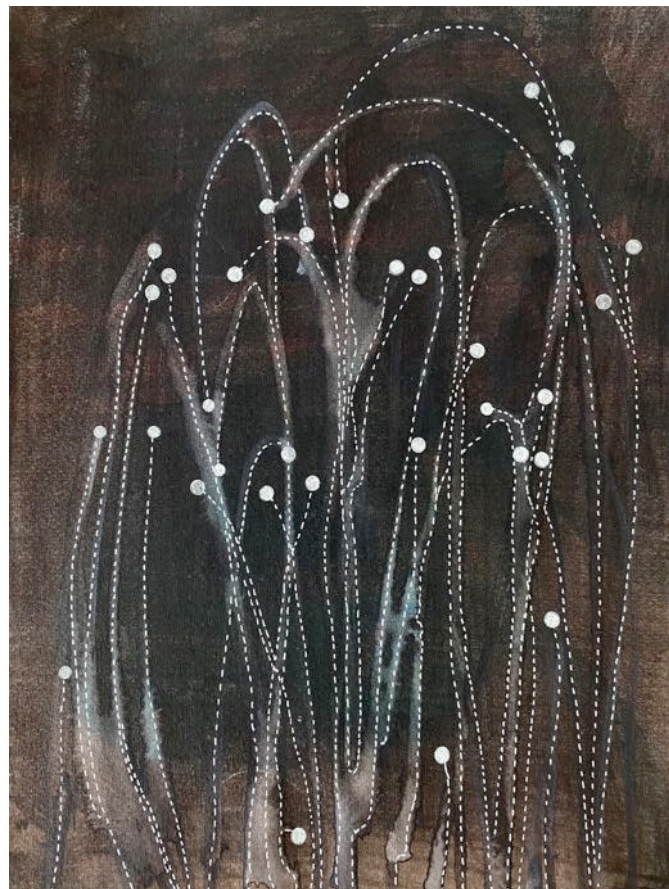






*REST*  
watercolour  
39 x 37 cm

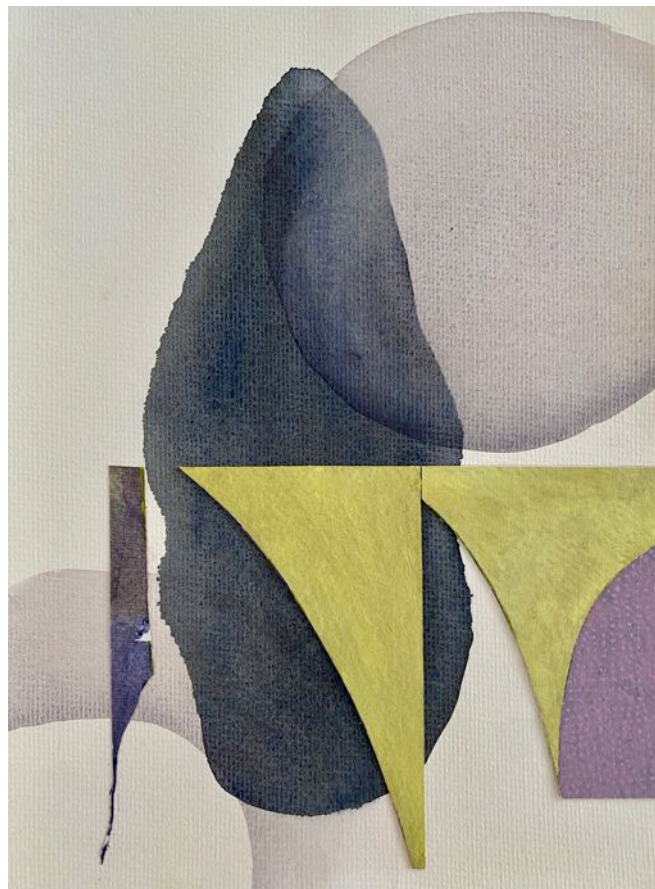
*SPREAD / SPURT*  
(diptych)  
watercolour & ink  
49.5 x 31 cm

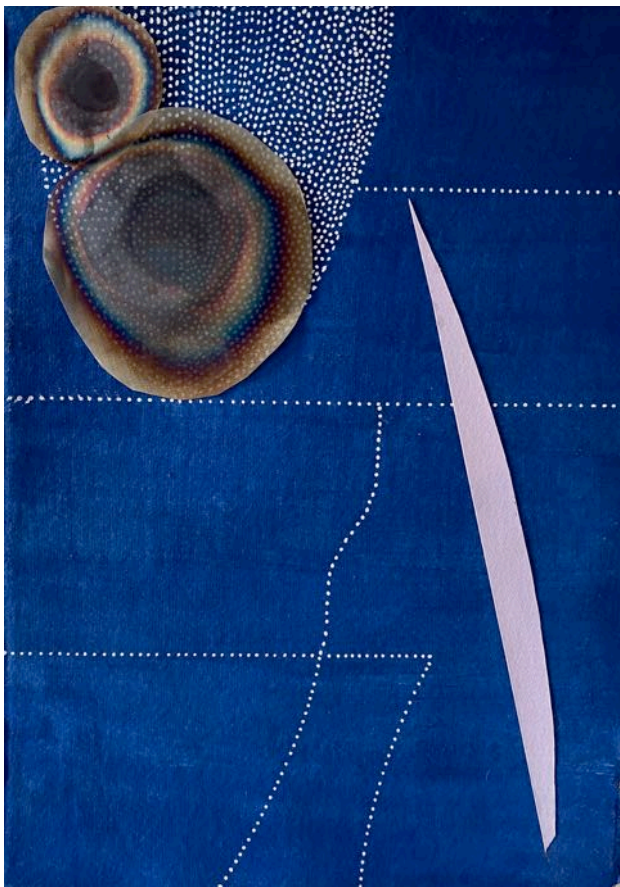




*FIVE CUTS*  
watercolour, collage, ink  
49.5 x 41 cm

*QUENCH*  
watercolour, collage  
47 x 37.5 cm





HOT METAL I  
watercolour, ink, steel mesh  
49 x 39 cm



## EILIS O'CONNELL RHA

### Education

1970 – 77	Crawford College of Art, Cork, Ireland
1974 – 75	Massachusetts College of Art, Boston, U.S.A
1983 – 84	Arts Council Northern Ireland British School at Rome Fellowship, Italy
1987	Arts Council of Ireland PS1 Fellowship, New York, USA

### Awards

2020	Elected international Fellow of the Royal Society of Sculptors, London
2020	The Moran Award for sculpture at the RHA Annual, Dublin
2019	Alumna Award, Cork institute of Technology, Cork
2018	Culture Ireland Award to show sculptures at E1027 and the Park at Rocquebrune, Cap Martin, France
2017	Culture Ireland Award for <i>Capsule for Destinies Unknown</i> , Ark, Chester Cathedral, Chester, UK
2016	Sculpture Award, RHA Annual, Dublin
2013	Culture Ireland Award, <i>The Physicality of Seeing</i> , One Canada Square & Jubilee Park, Canary Wharf, London
2011	Culture Ireland Award for <i>Women make Sculpture</i> , Pangolin Gallery, London
2010	Culture Ireland Award for <i>Crucible</i> at Gloucester Cathedral, UK
2009	Sculpture Award, RHA Annual Exhibition, Dublin, Ireland
1998	Royal Society of Arts Award, London
1996	Art and Work Award, Wapping Art Trust, for <i>Nyama</i> at 99 Bishopsgate, London, England
1990	Sunday Tribune Visual Artist of the Year Award, Dublin, Ireland
1990	Nordic Art Centre, Guest Studio Residency, Helsinki, Finland
1988	Two year Residency at Delfina Studios, London, England
1987	PS1 New York Fellowship Award, Arts Council of Ireland
1984	Elected to Aosdana
1981	GPA Award for Emerging Artists, Dublin, Ireland
1980	Mont Kavanagh Award for Environmental Art, Dublin, Ireland
1979-80	Irish Arts Council Bursaries
1977	'77 <i>Exhibition</i> Sculpture Award, EVA, Limerick.
1977	N.C.E.A. Award of Distinction in Sculpture, Dublin, Ireland

## Selected Solo Shows

- 2023 *A Family of Things: Eilis O' Connell*, FE Mc William Gallery, Co. Down, Northern Ireland
- 2022 *Breadth becomes Air*, Pangolin London. Kings Place, 90 York Way, London
- 2021 *Materials Matter*, Solomon Fine Art, Dublin
- 2020 *Lightly touching the earth back*, Gallery Pangolin, Chalford, Gloucestershire, UK
- 2020 *Eilis O'Connell sculpture experience in augmented reality*: RHA and IPUT collaboration, Wilton Park, Dublin
- 2018 Five large sculptures, Municipal Park, Roquebrune-Cap- Martin, France
- 2018 *Eilis O'Connell at E1027*, Eileen Gray's House, Cap Martin, France
- 2018 Outdoor sculptures in the grounds at West Dean College of Arts & Conservation, Chichester, West Sussex, UK
- 2016 *Eilis O'Connell*, 5 outdoor sculptures installed by the Cass Foundation, Royal Enclosure, Ascot, UK
- 2015 *Khôra*, Hillsboro Fine Art, Dublin
- 2013 *The Physicality of Seeing*, sculpture at I Canada Square and Jubilee Park, Canary Wharf, London
- 2013 *Specific Gravity*, Beardsmore Gallery, London
- 2012 *Cu*, works in copper, Allihies Copper Mines Museum, Beara Peninsula, Co. Cork
- 2011 *Eilis O'Connell*, West Cork Arts Centre, Skibbereen, Co. Cork
- 2011 *Haptic*, RHA, Royal Hibernian Academy Dublin
- 2008 *Biomorphia1-8*, Cass Sculpture Foundation, Goodwood, West Sussex, England
- 2007 *Sculpture at Charlesfort*, Kinsale Arts Week, Co. Cork
- 2005 *Double Void*, Green on Red Gallery, Dublin, Ireland
- 2002 *Eilis O'Connell*, Green on Red Gallery, Dublin, Ireland
- 2002 *Under and Over and other sculptures*, Canary Wharf, London
- 2000 *Eilis O'Connell*, Fenton Gallery, Cork, Ireland
- 2000 *Eilis O'Connell*, Newlyn, Art Gallery, Newlyn, Cornwall, England
- 1999 *A Decade of Sculpture*, retrospective, Arnolofini, Bristol, England
- 1999 Green on Red Gallery, Dublin, Ireland
- 1999 Sculpture, New Art Centre, Roche Court, Wiltshire, England
- 1997 *New Sculpture*, Butler Gallery, Kilkenny and Limerick City Art Gallery, Ireland
- 1996 *To swell the gourd*, Green on Red Gallery, Dublin, Ireland
- 1994 *New Work*, Green on Red Gallery, Dublin, Ireland
- 1994 *The Bridge Project*, Arnolfini, Bristol, England
- 1994 *New Sculpture*, Oriol, Cardiff, Wales

- 1993 *The Undomesticated Space*, The Gallery at John Jones, London
- 1990 *Ancient Rain*, Artsite Gallery, Bath, England
- 1989 *Between a Rock and a Hard Place*, Riverrun Gallery, Dublin
- 1988 *Bending the Bow*, Riverrun Gallery, Dublin, Ireland
- 1987 *Sculpture*, Hendricks Gallery, Dublin, Ireland
- 1986 *Steel Quarry*, Douglas Hyde Gallery, Trinity College, Dublin
- 1981-83 David Hendricks Gallery, Dublin, Ireland

Selected Group Exhibitions

- 2022 *Sculpture, Forever in the Now*, The Lightbox @ Victoria Place, Woking, Surrey, UK
- 2022 *Art on Paper*, New York, USA
- 2022 *Arts Council Collection at Uillinn*, Skibbereen, Co Cork
- 2021 *New Perspectives*, Acquisitions 2011- 2020, National Gallery of Ireland
- 2017-18 *Self Reflections*, National Self Portrait Collection at the F.E. Mc William Gallery, Banbridge, N. Ireland
- 2014 *Beyond Limits*, Sculpture at Chatsworth, Derbyshire, England
- 2013 *Gems from The Butler Gallery Collection*, Kilkenny
- 2012 *Sculpture Proposals for the Walton Memorial*, The Long Room, Trinity College Dublin
- 2011 *Collecting for Ireland*, Works from the Arts Council of Ireland Collection, Hunt Museum, Limerick
- 2009 *Visual*, Centre for Contemporary Art & George Bernard Shaw Theatre, Carlow
- 2009 *Between Metaphor and Object*, Irish Museum of Modern Art, Dublin
- 2009 *Then + Now*, *Evolving Art Practices*, Glucksman Gallery, University College Cork, Ireland
- 2008 *Turning the Season*, Wapping Power Station, London
- 2004 *Views from an Island: Irish Contemporary Art* in Beijing and Shanghai, China
- 2003 *Sterling Stuff*, Pangolin Gallery, Royal Academy, London & Sigurjon Olafsson Museum, Reykjavik, Iceland
- 2002 *Imaginaire Feminin*, Lido, Venice, Italy
- 2002 *Thinking Big*, The Guggenheim Museum, Venice, Italy
- 1999 *Shape of the Century - 100 years of sculpture in Britain*, Salisbury and Canary Wharf, London, England.
- 1999 *0044 Artists Working in London*, P.S.1 New York, Albright Knox Museum, Buffalo, New York, Crawford Art Gallery, Cork and Ormeau Baths Gallery, Belfast
- 1997 *Re-dressing Cathleen*, McMullen Museum of Art, Boston College, Boston
- 1996 *Innovation from Tradition*, Council of Europe, Brussels, Belgium

- 1989 *Whitechapel Open*, Whitechapel Gallery, London, England
- 1989 *P.S.1 Studio Artists*, P.S.1. Gallery, New York, USA
- 1988 *Spatial Displacement*, Bernard Jacobson Gallery, New York, USA
- 1986 *Europalia 11 European Sculptors*, Ospedale degli Innocenti, Florence, Italy
- 1985 Sao Paulo Bienal, touring to Rio de Janeiro, Brazil & Buenos.Aires, Argentina
- 1984 Rosc Quadrennial International Exhibition, Guinness Hop Store, Dublin
- 1984 *10 Artists*, British School at Rome, Accademia Britannica, Rome
- 1982 Paris Biennale, Paris, France

Eilis O'Connell also exhibits regularly in group exhibitions at Royal Hibernian Academy, Dublin, Solomon Fine Art, Dublin, Pangolin Gallery, London and Gloucester, UK. Her graphic work is shown at art fairs worldwide with Stoney Road Press Editions, Dublin.

#### Commissions and acquisitions for public and private spaces

- 2023 Screen for EG, Royalton Group, Hamilton Gardens, Dublin
- 2020 *Suppose an Outcrop*, stainless steel landmark sculpture for coastal site in Sligo, Ireland
- 2019 *Ovo*, a large hand carved sculpture in Carrara marble commissioned by Avolon for 1 Ballsbridge, Dublin
- 2018 *Carapace*, woven stainless cable on stainless steel frame for Green Property at 5 Harcourt Road, Dublin
- 2107 *Night Gates*, laser cut painted stainless steel for 10 Molesworth Street, Dublin
- 2016 *Unfurl 2*, commissioned by Simon Capstick Dale, New York
- 2016 *Unfurl 3*, commissioned by IPUT for 10 Molesworth Street, Dublin
- 2015 *Atlantic Oak*, Bronze sculpture acquired by the Office of Public Works for Tip O'Neill Park, Mallow, Co. Cork
- 2014 *Chroma*, commissioned by University College Dublin for The Science Building, UCD, Dublin
- 2013 *Atoms & Apples*, sculpture commission for Trinity College Dublin to commemorate the life and work of ETS Walton who jointly received the Nobel Prize for splitting the atom with Sir John Cockcroft in 1951
- 2010 *Vortex*, private garden commission in collaboration with Andrew Ewing & Luciano Juibelli, London
- 2008 *Biomorphia 1-8*, commissioned by the Cass Foundation to make 8 large sculptures exploring the formal possibilities of composite technology
- 2005 *Reedpod*, a 13.3 metre sculpture in stainless steel and copper for Cork
- 2004 *Everchanging*, a polished stainless steel sculpture for Newcastle City Council, Newcastle Upon Tyne, England
- 2003 *Appetites of Gravity*, bronze sculpture for Dundalk Institute of Technology

- 2003 *The Square Inside*, a sculpture in clear cast resin for Naas General Hospital, Naas, Co. Kildare, Ireland
- 2002 Street Furniture Project with JC Decaux, Paris, France
- 2002 Two bronzes for HQ4 Building, Canary Wharf, London, England
- 2001 *Under & Over*, a bronze sculpture for Lismore Castle, Ireland
- 2001 *Unfold*, a bronze for Sculpture at Goodwood, West Sussex, England
- 2001 *Shear*, a stainless steel sculpture for Bevois Valley, commissioned by Southampton City Council, England
- 2000 *Unfurl*, a bronze commissioned by Kensington Borough Council, London
- 1999 *Carapace*, a large outdoor sculpture in stainless steel and woven stainless steel cable, Sculpture at Goodwood, West Sussex, England
- 1999 *More Equal*, bronze sculpture commissioned for Grand Canal Plaza, Dublin
- 1999 *Pero Foot Bridge* for Bristol Chamber of Commerce, designed in collaboration with Ove Arup Engineers at St. Augustine's Reach, Bristol. England
- 1998 *Helix*, a woven stainless steel sculpture commissioned by C.A.S. Projects for 1 Curzon Street, London
- 1998 *Tower of Light*, sculpture in stainless steel, glass and fibre optics for Wolverhampton Borough Council, Hare Street Roundabout. Bilston, England
- 1998 *Vowel of earth dreaming its root*, stone sculpture for London Docklands Development Corporation, London
- 1995 *Nyama*, a series of ten sculptures in various metals for Hammerson Properties, sited both in the courtyard and the lobby of 99 Bishopsgate, London
- 1994 *Out of Bounds*, outdoor sculpture in bronze, Office of Public Works sited at Central Statistics Office, Cork
- 1994 *Space Emptied Out*, a large outdoor piece for Sculpture at Goodwood, West Sussex, England
- 1993 *Zuni-Zenor*, an outdoor wall sculpture in bronze, commissioned by the Contemporary Art Society for Broadgate Properties, 10 Fleet Place, London
- 1993 Aversvika Cultural Landscape Project, installation for the 1994 Winter Olympics, Hamar, Norway
- 1992 *Secret Station*, outdoor sculpture in bronze, stainless steel, fibre-optics & steam for TCardiff Docks, Wales
- 1992 *The Space Between*, outdoor sculpture in bronze and fibre optics for Milton Keynes Development Corporation, Exchange Square, Milton Keynes, England

# EILIS O'CONNELL RHA

Hardware / Software

26 October - 18 November 2023

## SCULPTURE

Torc	2023	Jesmonite, glass cloth, paint, ink	unique	42 x 40 x 16 cm
Concretion	2021	Arabescato marble	edition of 3	26 x 28 x 35 cm
Concretion	2021	Bianca Carrara marble	edition of 3	26 x 28 x 35 cm
Maquette for Thornmorph	2021	Bianca Carrara marble	unique	31 x 17 x 10 cm.
Curve Continuous	2021	Jesmonite, paint, ink	unique	15 x 40 x 35 cm
Shelter	2021	bronze	edition of 5	44 x 21 x 26 cm
Imatra	2021	Carrara marble	edition of 3	22 x 24 x 26 cm
Sprawl	2021	bronze	edition of 5	25 x 36 x 46 cm
Poles Apart	2021	Carrara marble	edition of 3	29 x 31 x 19 cm
Cutaway	2021	bronze	edition of 5	26 x 22 x 42 cm
Slope	2019	Carrara marble	edition of 3	32 x 35 x 19 cm
Cavus	2019	bronze	edition of 3	17 x 42 x 34 cm
Hole Stones	2018	cast bronze	edition of 10	12.5 x 23 x 12.5 + 12 x 15.5 x 12 cm
Whorl	2017	bronze	edition of 7	21 x 24 x 30 cm
Prairie	2016	cast sterling silver	edition of 8	15.5 x 17 x 6.5 cm
Scribble	2016	bronze	edition of 10	24 x 23 x 27 cm
Furrow	2016	bronze	edition of 10	31.5 x 42 x 25 cm

## WORKS ON PAPER

If	2023	watercolour, collage, gouache	47 x 39.5 cm
Hot Metal I	2023	watercolour, ink, steel mesh	49 x 39 cm
Spaced Out	2023	watercolour, collage	49 x 48 cm
Clasp	2023	watercolour, collage, gouache	47 x 37.5 cm
She Might	2023	watercolour	45 x 44 cm
Fragments	2023	gouache	44 x 37 cm
Maybe / Unlikely / Pass By	2023	acrylic, ink	71 x 53.5 cm (each)
Rest	2022	watercolour	39 x 37 cm
Quench	2022	watercolour, collage	47 x 37.5 cm
Descent	2022	watercolour, collage, ink	48.5 x 39 cm
Seedbomb	2022	watercolour	39.5 x 38.5 cm
Five Cuts	2022	watercolour, collage, ink	49.5 x 41 cm
Purple Valley	2022	watercolour, coloured pencil, ink	46 x 37 cm
Endless Possibilities	2021	watercolour	31 x 32 cm
Under	2021	watercolour, ink	49 x 48 cm
Holding	2021	watercolour	39.5 x 38.5 cm
Openings	2020	watercolour, gouache	39.5 x 38.5 cm
Surround Sound	2020	watercolour, collage, ink	43.5 x 36 cm
Honesty	2019	canvas, plaster, paint, kozo paper, honesty seeds	30 x 50 each
Spread / Spurt (diptych)	2019	watercolour, ink	49.5 x 41 cm

*First published in 2023 by Solomon Fine Art*

*ISBN: 978-1-7394326-3-8*

*All images in this catalogue are protected by copyright*

Back cover: HOLE STONES, 2018, cast bronze, edition of 10, 12.5 x 23 x 12.5 and 12 x 15.5 x 12 cm

# EILIS O'CONNELL

*Hardware / Software*

26 October - 18 November 2023

