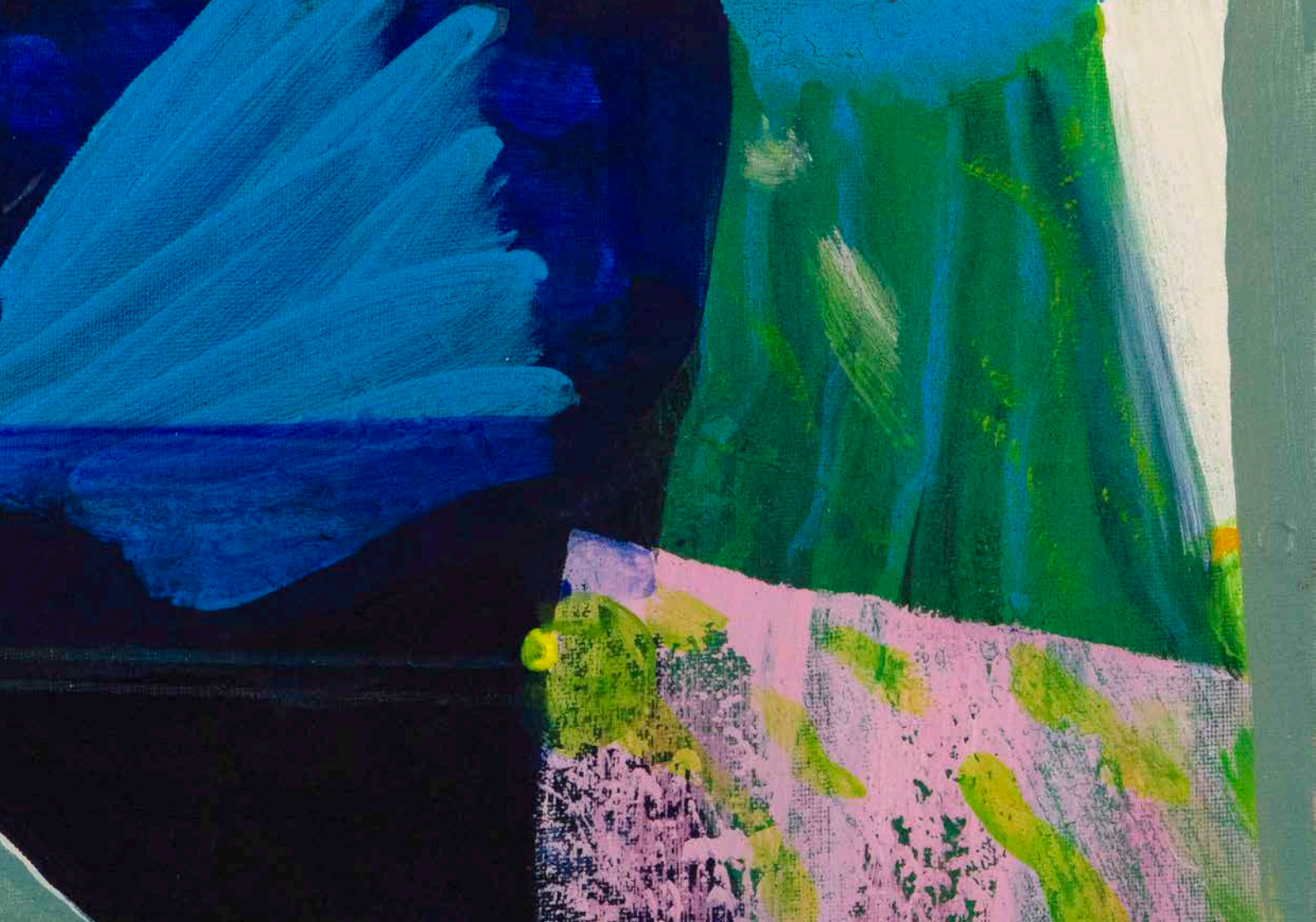




EAMON COLMAN  
*Curated by Rain*



Tara Murphy  
requests the pleasure of your company at the private view of

artists' agents  
fine art consultants  
gallery

# EAMON COLMAN

*Curated by Rain*

solomon

to be opened by  
*Des Whelan, Board Member, Mount Congreve Gardens, Waterford*

Thursday 28 May 2026  
from 6pm to 8pm

*Eamon will give a tour of the exhibition at 5pm before the opening, to coincide with the new Dublin By Dusk: Last Thursdays initiative, in conjunction with Dublin City Council, Dept. of Culture, Communications & Sport, Failte Ireland and Dublin Town.*

The exhibition continues until Saturday 20 June 2026  
Opening hours: Tuesday to Friday 10.00am – 5.30pm / Saturday: 11am – 4pm

Artworks may be viewed and acquired in advance at the gallery by appointment, via the Online Viewing Room at [www.solomonfineart.ie](http://www.solomonfineart.ie) - or simply scan the QR code below for prices and availability.

## Solomon Fine Art

Balfe Street, Dublin 2, D02 T802, Ireland  
t: +353 (0)1 672 4429 / e: [info@solomonfineart.ie](mailto:info@solomonfineart.ie) / [www.solomonfineart.ie](http://www.solomonfineart.ie)

front cover: *When clamorous Centaurs thunder to the rain pool, mixed media on linen, 40 x 40 cm (detail)*

inside cover: *A million light-years later, mixed media on linen, 30 x 30 cm (detail)*

back cover: *A rose like a chocolate song, mixed media on linen, 30 x 40 cm*



## Eamon Colman: *Curated by Rain*

In *Curated by Rain*, Eamon Colman extends a lifelong engagement with landscape, observation, and the lived experience of nature into a body of work shaped by immersion, duration, and chance. Developed following his 2025 artist residency at Mount Congreve Gardens,<sup>1</sup> the exhibition emerges from sustained encounters with one of Ireland's most celebrated horticultural environments, a place where cultivated order and natural unpredictability exist in constant dialogue.

Colman's practice has long resisted spectacle in favour of attention. Like his recent exhibition *One* at the Tea House in Kilkenny, these works arise from prolonged looking: sitting, noticing, waiting, and returning. The paintings carry the atmosphere of repeated visits through changing weather and seasons, where colour, texture, natural forms, smell, and shifting light accumulate slowly into visual thought. During the residency, Colman created sketches, photographs, notes, and gathered plant material directly from the gardens, translating these experiences into paintings that move between observation and memory, structure and intuition.

The exhibition's title originates from necessity, when, during the installation of several paintings in Mount Congreve's charming derelict Peach House, *'the frequent showers of rain became an integral element of the curation due to the numerous leaks in the roof. The artwork was placed safely in the dry areas - curated by rain.'*<sup>2</sup> What began as a practical necessity evolved into a central metaphor within Colman's thinking. In this accidental choreography, weather assumed authorship.

From this moment, *Curated by Rain* expands outward into a wider reflection on human behaviour and vulnerability. Rain determines movement: whether we venture outside, what we wear, where we gather, and what we avoid. Increasingly, climate and extreme weather shape not only individual routines but collective futures. Floods, environmental instability, and climate change now alter landscapes and lives on a global scale. Colman suggests that, in different ways, all of us are becoming curated by the weather.

Yet these paintings are not didactic. Rather, they remain rooted in close observation and sensory experience. The garden becomes both subject and thinking space, a site where beauty, fragility, growth, and uncertainty coexist. Colman's immersion in Mount Congreve Gardens deepens his longstanding research into the relationship between culture and ecology, while reaffirming painting itself as an act of sustained attention in an accelerated world. Ultimately, *Curated by Rain* is less about depicting the gardens than about inhabiting them - and recognising how deeply human life remains entangled with forces beyond our control.

Eamon Colman  
May 2026

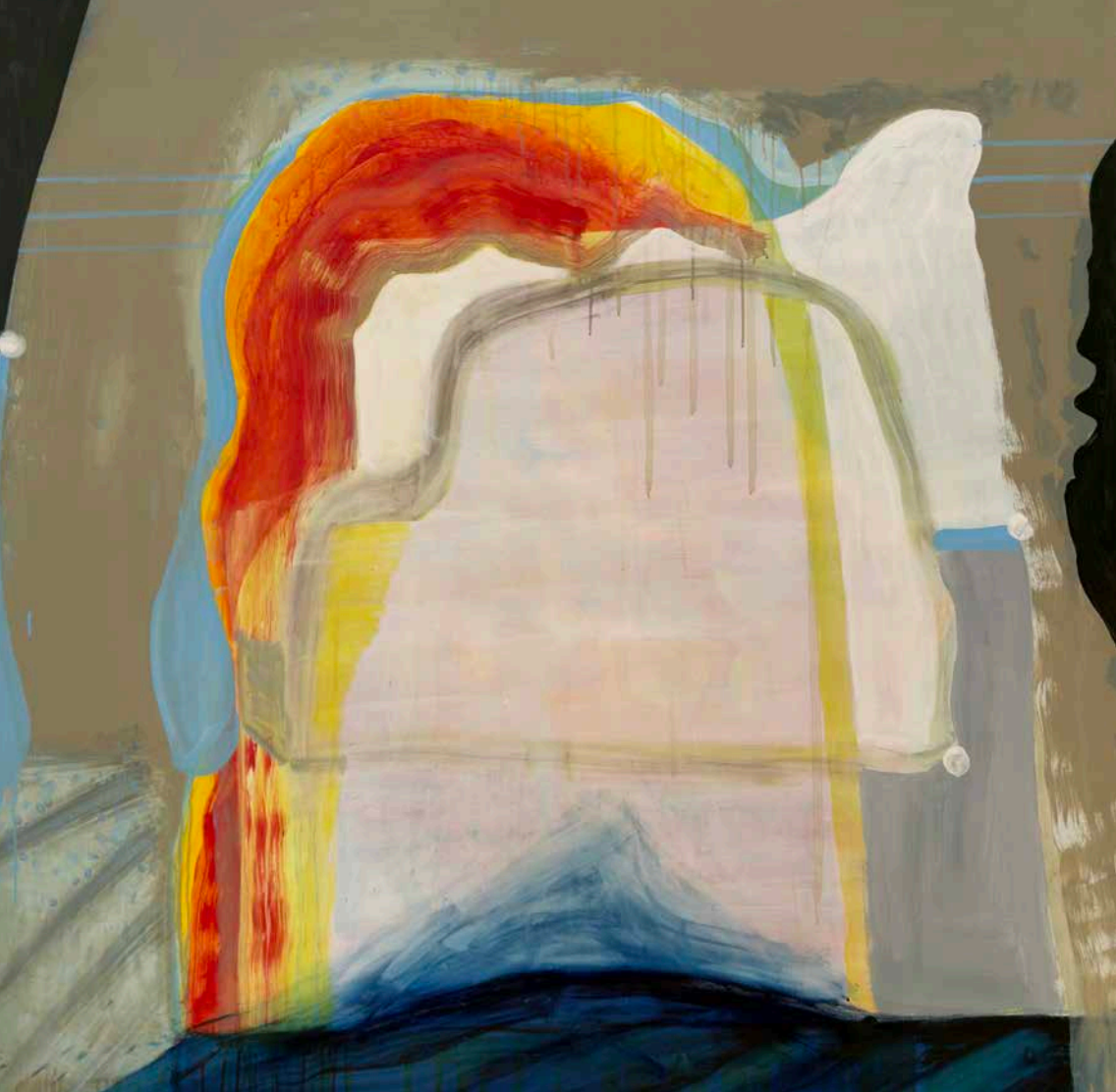
---

<sup>1</sup> This year-long residency is a collaboration between Artform, Dunmore East and Mount Congreve Gardens, Co. Waterford.

<sup>2</sup> Martina O'Byrne, Program Director at Artform Dunmore East.

*Ahhh there, did you ever  
dance in the woods?*  
mixed media on linen  
150 x 150 cm

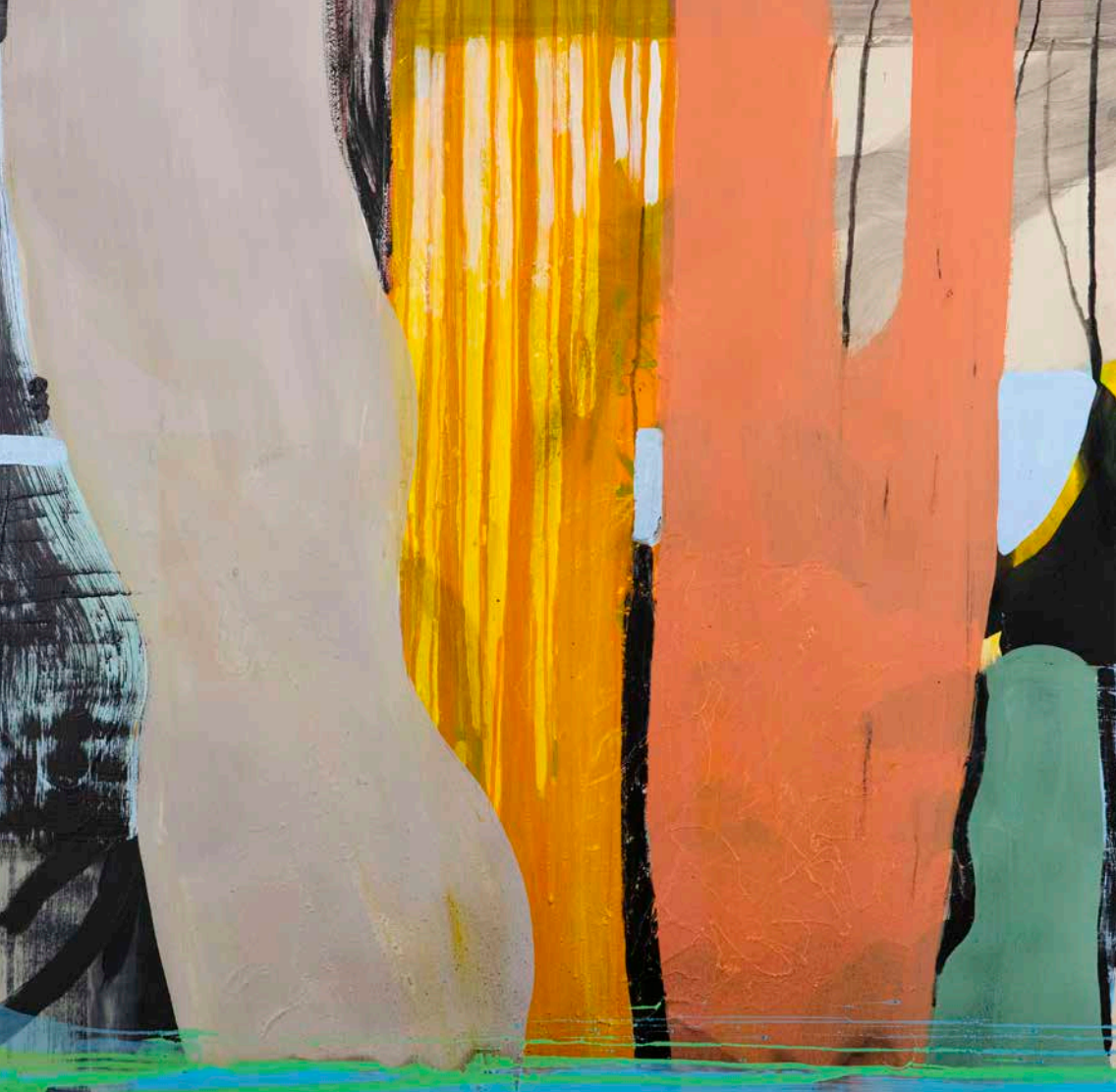




*All aboard for  
Pigeon Mountain*  
mixed media on linen  
150 x 150 cm

*Which do you think is louder,  
the radio or the cricket?*  
mixed media on linen  
100 x 100 cm





*There you go now, the  
trees are singing to you*  
mixed media on linen  
100 x 100 cm

*Do you give a thought, now  
and then, to the essential  
sparrow or the necessary toad?*  
mixed media on linen  
100 x 100 cm





*One November morning,  
yesterday's water is solid*  
mixed media on linen  
100 x 100 cm

*There's a moon in them there  
puddles (a walk with U and M)*  
mixed media on linen  
100 x 100 cm





*I heard the cuckoo call my name*  
mixed media on linen  
40 x 40 cm



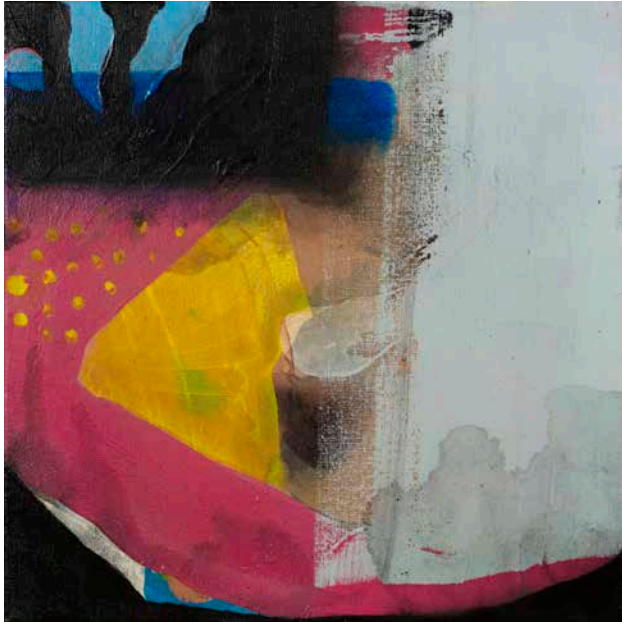
*A portrait of a blue day*  
mixed media on linen  
40 x 40 cm



*The vastest things are those we may not learn*  
mixed media on linen  
40 x 40 cm



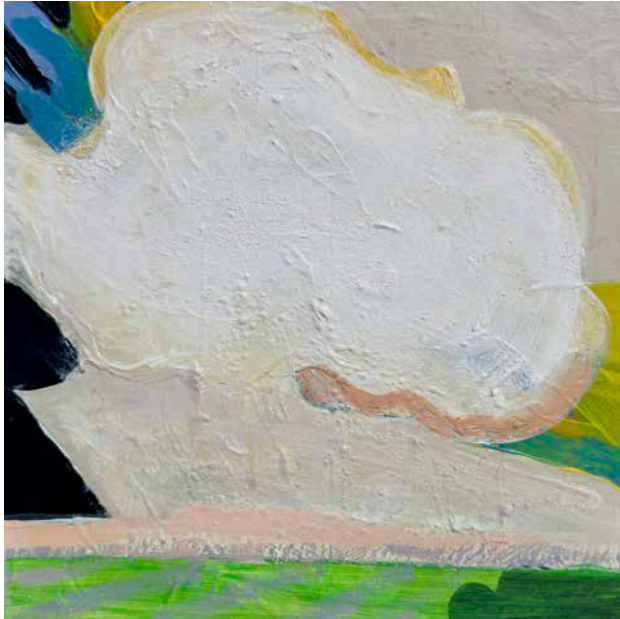
*Up and away for Pigeon Mountain*  
mixed media on linen  
40 x 40 cm



*When clamorous Centaurs thunder to the rain pool*  
mixed media on linen  
40 x 40 cm



*The comfort of elms*  
mixed media on linen  
30 x 30 cm



*Milk cloud sang almost blue*  
mixed media on linen  
30 x 30 cm



*In this universe burns an angel, strange amongst rowdy Gods*  
mixed media on linen  
30 x 30 cm



*The lit or hooded ghost*  
mixed media on linen  
30 x 30 cm



*The snow tree recalls a tale of a spider wind*  
mixed media on linen  
30 x 30 cm



*The bird house sang of an exotic past*  
mixed media on linen  
30 x 30 cm



*A million light-years later*  
mixed media on linen  
30 x 30 cm



*Moon in the morning throws the shutters open*  
mixed media on linen  
30 x 30 cm



*Every day down to this*  
mixed media on linen  
30 x 30 cm



*Round and round the planet we go on towards Pigeon Mountain*  
mixed media on linen  
30 x 30 cm



*On a white morning there was a temporary cool*  
mixed media on linen  
30 x 30 cm

# EAMON COLMAN

1957	Born in Dublin, Ireland
1993 - 1995	Chairperson, Artist Association of Ireland
1993 - 1996	Board Member, Sculptors Society of Ireland
1995 - 2000	President, The European Council of Artists
2000 - 2004	Board Member, Butler Gallery, Kilkenny
2007 -	Elected Member of Aosdána
2018 - 2022	Elected Member of The Arts Council of Ireland, Toscairi

## SOLO EXHIBITIONS

2026	Curated by Rain, Solomon Fine Art, Dublin One, The Tea Houses, Kilkenny (invited by curator Shane Gallagher and Shannon Carroll)
2025	Curated by Rain, Peach House, Mount Congreve Gardens, Co. Waterford At Home with Eamon Colman, Kings Road, Belfast (curated by Hambly & Hambly)
2024	Harmony in Diversity: Nature's Circular Dance, Solomon Fine Art, Dublin
2023	Twenty-Eight Acres, Butler Gallery and Museum, Kilkenny
2022	Thinking Like a Mountain, Solomon Fine Art, Dublin
2021	Into The Mountain, Source Arts Centre, Co. Tipperary (invited)
2020	The Width of Yourself, Solomon Fine Art, Dublin
2019	The Width of Yourself, Solas Art Gallery, Ballinamore, County Leitrim (invited) Double Vision, Eamon Colman and Blaise Smith, Kilkenny Arts Festival (invited)
2018	Thaw Oriel Q (Queens Hall Gallery), Narberth, Wales, UK (invited), part of Culture Ireland GB18 programme Mark Making, Claremorris Gallery, Co. Mayo (invited)
2017	Thinking-In-Movement, Stern Studio, Vienna, Austria (invited)
2015	Walking at three miles per hour, Hillsboro Fine Art, Dublin
2014	Works on Paper, Oriel Queens Hall Gallery, Narbert, Wales
2013	Panorama, A Review, Strule Arts Centre, Omagh, Co. Tyrone Scattered Showers, Christchurch Gallery, Triskel Arts Center, Cork
2012	There is no season for margins, Hillsboro Fine Art, Dublin
2011	Monument, Stern Studio Gallery, Vienna, Austria, invited
2010	Before the dark gets stronger than the light, RUA RED, South Dublin Arts Centre, Tallaght, Dublin (invited) What is real or actual, everything or nothing, Oriel Queens Hall Gallery, Narberth, South Wales
2008	Remnant, Cecille R. Hunt Gallery, Webster University, St Louis, USA Vantage, Hillsboro Fine Art, Dublin - catalogue

2007 Breath of the River, Galeri Caernarfon Cyf, Wales  
 2006 Between Bog and a Sagging Wall, Vangard Gallery, Cork  
 Knot of Souls, South Tipperary Arts Center, Clonmel, Co. Tipperary  
 Salt River, St. David's University, Lampeter, Wales / Oriel Queens Hall Gallery, Wales / Hillsboro Fine Art, Dublin  
 2004 Africa 22° - 35° S, Hillsboro Fine Art, Dublin (limited edition artist's book)  
 2002 Walking Vermont, Vermont Studio Centre USA (catalogue)  
 Vangard Gallery, Cork  
 2000 Rain on Water, Rubicon Gallery, Dublin  
 1999 Frederickshaven, Denmark  
 1998 Festival Interceltique de Lorient, Palais des Congres, Lorient, France  
 River Walk, Vangard Gallery, Cork  
 1997 Post Cards Home, RHA Gallagher Gallery, Dublin (monograph)  
 1996-1995 Digging for Pearls, Rubicon Gallery Dublin and Driochead Arts Centre, Drogheda  
 1994 Home of the Snake King, Rubicon Gallery, Dublin  
 1992 Islands, Rubicon Gallery, Dublin  
 1991 One man show, Sligo Arts Week, Model Arts Centre, Sligo  
 1990 India, Rubicon Gallery, Dublin  
 Dreams from the Lions Head, Rubicon Gallery ,Dublin  
 1988 Solo Exhibition Monaghan County Museum  
 1987 Solo Exhibition, United Arts Club, Dublin  
 1984 Grafton Gallery, Dublin  
 1982, 1980 Tulfarris Gallery, Wicklow

#### AWARDS / RESIDENCIES / COMMISSIONS

2026 Lifetime Award, Mount Congreve Gardens, Co. Waterford  
 2025 Artist in Residence, Mount Congreve Gardens, Co. Waterford  
 2022-2023 Artist of The Year, Art & Museum, UK  
 2018 Culture Ireland GB18 Award, Wales, UK  
 2018, 04 Arts Act Grant, Kilkenny County Council  
 2018, 1989 Tyrone Guthrie Centre Residency awarded by Kilkenny County Council  
 2017 Culture Ireland Award, exhibition in Vienna, Austria  
 2015 ArtLinks Award, Kilkenny County Council  
 2009 Ballyfermot Travellers Action Project - Book Project (residency)  
 Traveller Peace Pin - Pavee Point commission to design a symbol pin against violence  
 2007 Dungarvan Community Hospital, Percent For Art commission (shortlisted)

2007 Cill Rialaig Project (invited to work with Niall Naessens / Master Print maker), residency  
 Inish Lacken Project, Connemara, Co. Galway (residency)  
 Uni Truck, Belfast, Northern Ireland

2007, 1992 Ballinglen Art Foundation, Co. Mayo (residency)

2005 CCAT Interreg Major Award for touring exhibition in Wales

2002 Percent For Art Commission, Roscommon Arts Centre  
 The Vermont Studio Centre USA, Full Fellowship Award

2001 Eigse, First prize painting  
 Percent For Art Commission, The Bell Centre, Darndale, Dublin  
 The Euro World Project, First prize with Crumlin Children's Hospital

2000, 1993 Art Flight, awarded by the Arts Council of Ireland

1999 Residency in Hirsholmene, awarded by the Danish Council of Artists

1996, 1991 Arts Council of Ireland, Materials Grant

1995 Arts Council of Ireland, Major Artist Bursary

1993 S.I.P.T.U. Print Award

1992 Set design for 'After the Picnic' by Evelyn Waugh, Players Theatre, Trinity College Dublin

1989 EVA International, First Prize Painting, Limerick  
 Studio Exchange for one year to India, The Calcutta Artist Union

1987 Purchase Award S.A.D.E

#### COLLECTIONS

National Gallery of Ireland  
 Office Of Public Works: State Art Collection  
 Irish Museum of Modern Art (Gordon Lambert Collection)  
 Butler Gallery & Museum, Kilkenny  
 The Arts Council of Ireland  
 The Danish Arts Council  
 Irish Contemporary Arts Society  
 Royal Victoria Hospital, Belfast  
 Wexford County Council  
 Kings House Museum, Boyle  
 Tralee Regional Technical College  
 IBEC  
 Norwich Union  
 Ulster Bank

Deutsche Bank  
 AIB Bank, Brussels  
 Bank of Ireland, Brussels  
 Citibank  
 KPMG  
 American Express  
 Irish Life  
 Arthur Anderson  
 Smurfit Kappa  
 Fyffes Ireland  
 Delta Airlines  
 Philip Docahalo Corp. Florida  
 McCann Fitzgerald Solicitors  
 Fitzsimons Mallon Solicitors  
 The Leinster Hotel, Dublin

Sheen Falls Hotel  
 Gresham Hotel, Dublin  
 Ice House Hotel & Spa, Ballina  
 Jury's Inn, Manchester  
 Lough Erne Resort  
 Belle Isle Hotel – Crawford Collection  
 The Strand Inn  
 The Green Lizard Restaurant  
 The Merrion Inn  
 Clery's Select Tea Rooms  
 McCormack & Sons  
 Vermont Studio Centre  
 Unitruck  
 De Vere's private collection

# EAMON COLMAN

## *Curated by Rain*

28 May - 20 June 2026

1. Ahhh there, did you ever dance in the woods?	2024-2026	mixed media on linen	150 x 150cm
2. All aboard for Pigeon Mountain	2025-2026	mixed media on linen	150 x 150cm
3. Which do you think is louder, the radio or the cricket?	2024-2025	mixed media on linen	100 x 100cm
4. There you go now, the trees are singing to you	2025-2026	mixed media on linen	100 x 100cm
5. Do you give a thought, now and then, to the essential sparrow or the necessary toad?	2024-2026	mixed media on linen	100 x 100cm
6. One November morning, yesterday's water is solid	2025-2026	mixed media on linen	100 x 100cm
7. There's a moon in them there puddles (a walk with U and M)	2025-2026	mixed media on linen	100 x 100cm
8. I heard the cuckoo call my name	2024-2026	mixed media on linen	40 x 40cm
9. A portrait of a blue day	2024-2026	mixed media on linen	40 x 40cm
10. The vastest things are those we may not learn	2024-2026	mixed media on linen	40 x 40cm
11. Up and away for Pigeon Mountain	2024-2026	mixed media on linen	40 x 40cm
12. When clamorous Centaurs thunder to the rain pool	2024-2026	mixed media on linen	40 x 40cm
13. A rose like a chocolate song	2025-2026	mixed media on linen	30 x 40cm
14. The comfort of elms	2025-2026	mixed media on linen	30 x 30cm
15. Milk cloud sang almost blue	2025-2026	mixed media on linen	30 x 30cm
16. In this universe burns an angel, strange amongst rowdy Gods	2024-2026	mixed media on linen	30 x 30cm
17. The lit or hooded ghost	2025-2026	mixed media on linen	30 x 30cm
18. The snow tree recalls a tale of a spider wind	2025-2026	mixed media on linen	30 x 30cm
19. The bird house sang of an exotic past	2022-2026	mixed media on linen	30 x 30cm
20. A million light-years later	2024-2026	mixed media on linen	30 x 30cm
21. Moon in the morning throws the shutters open	2022-2026	mixed media on linen	30 x 30cm
22. Every day down to this	2026	mixed media on linen	30 x 30cm
23. Round and round the planet we go on towards Pigeon Mountain	2026	mixed media on linen	30 x 30cm
24. On a white morning there was a temporary cool	2026	mixed media on linen	30 x 30cm

First published in 2026 by Solomon Fine Art

ISBN: 978-1-9192400-4-6

© Solomon Fine Art and the artist



Solomon Fine Art, Balfe Street, Dublin 2, Ireland  
t: +353 (0)1 672 4429 / [www.solomonfineart.ie](http://www.solomonfineart.ie)  
**SOLOMON FINE ART**  
Balfe Street, Dublin 2, D02 T802, Ireland  
t: +353 (0)1 672 4429 / e: [info@solomonfineart.ie](mailto:info@solomonfineart.ie) / [www.solomonfineart.ie](http://www.solomonfineart.ie)